

# Partnership for Strong Families Service Provider Agreements (2009-2023)

The Partnership for Strong Families (PSF) Family Resource Center (FRC) Model is a multi-system collaborative, with representation across five sectors (public, business, philanthropy, community, and nonprofit). These collaborations help PSF Family Resource Centers assist communities who have historically had limited access to family support services.

Over time, a large network of community partnerships was developed across PSF's network of Family Resource Centers, including Library Partnership Resource Center (LPRC), SWAG Family Resource Center (SWAG FRC), NorthStar Family Resource Center (NSFRC) and Cone Park Library Resource Center (CPLRC). A list of the 93 active community partners in 2023 can be found on the back of this infographic. Every service provided at the FRCs is free, responsive to the needs of the surrounding community, and tied to one of the five protective factors.

In addition to partners with official agreements, there are many providers that deliver one-time events and provide support through sponsorship, co-event planning, and on-site outreach.

Chart 1 identifies the number of active agreements each year at PSF. There has been an average of 8 new agreements initiated each year with 93 of 125 (74%) initiated agreements remaining active over 14 years. PSF's FRC staff have been successful in their efforts to initiate and sustain community collaborations that provide direct services to families in need.

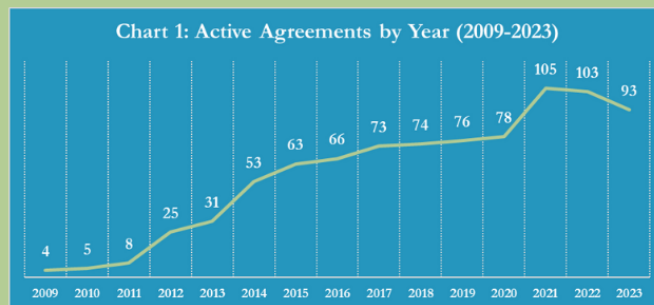
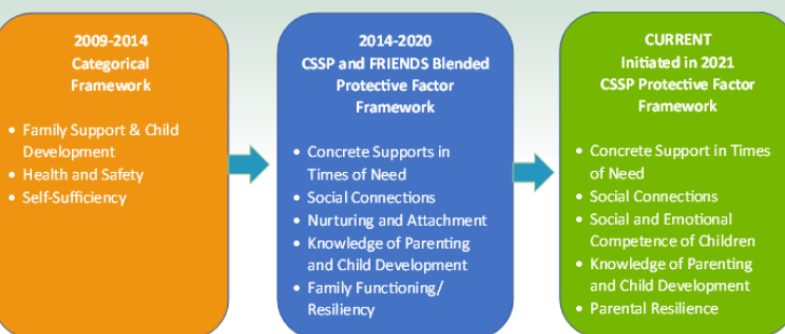


Chart 2: Resource Center Frameworks from 2009 to Current



From 2009 to 2022 there were several categorical and protective factor frameworks used to guide the Resource Center Model at PSF. From 2009 to 2014, the Family Resource Centers used a categorical framework, between 2014 and 2020 a blended CSSP and FRIENDS framework was used, and in 2021 a CSSP-only framework was implemented. Chart 2 illustrates the various frameworks over the course of the implementation of the FRC model at PSF. Chart 3 illustrates the number of agreements aligning with each protective factor over time.

## Definitions of each category or protective factor:

★ **Family Support and Child Development:** Family activities and services requested by the families, including but are not limited to mentoring, parenting classes, tutoring, Girl Scouts, and peer support.

📋 **Health and Safety:** Referrals to health services, health and medical resources for children and adults at the center, and prevention and wellness education.

🌟 **Self-Sufficiency:** Concrete help for immediate needs with an emphasis on these assists being geared to long-term independence.

🌱 **Concrete Supports:** Access to concrete support and services that address a family's needs to help minimize stress caused by challenges.

✓ **Knowledge of Parenting and Child Development:** Understanding child development and parenting strategies that support physical, cognitive, language, social and emotional development.

💎 **Nurturing and Attachment:** The emotional tie along with a pattern of positive interaction between the parent and child that develops over time.

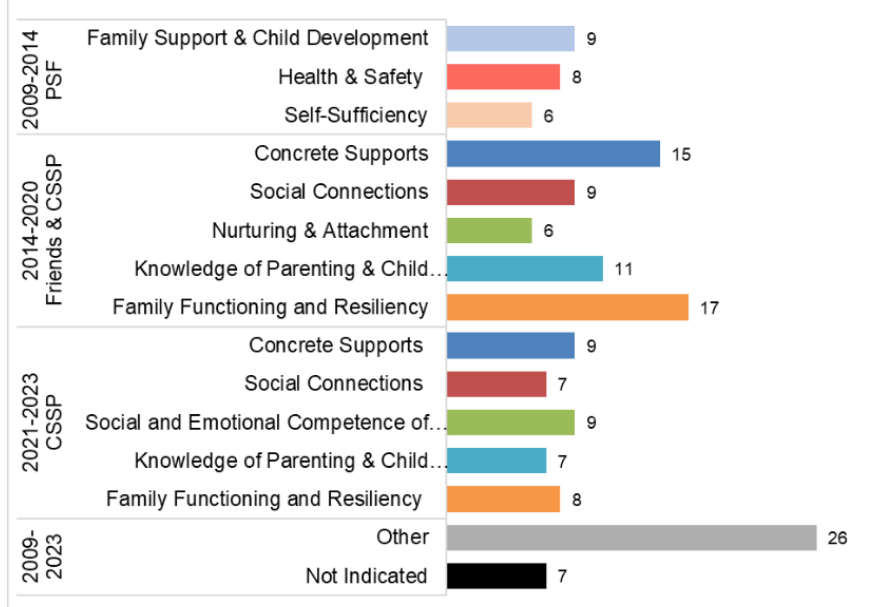
✂️ **Social and Emotional Competence of Children:** Family and child interactions that help children develop the ability to communicate clearly, recognize and regulate their emotions, and establish and maintain relationships.

▲ **Social Connections:** Positive relationships that provide emotional, informational, instrumental, and spiritual support.

♥ **Family Functioning/Resiliency:** Having adaptive skills and strategies to persevere in times of crisis. Family's ability to openly share positive and negative experiences and mobilize to accept, solve, and manage problems.

♣️ **Parental Resilience:** Managing stress and functioning well when faced with challenges, adversity and trauma.

Chart 3: Agreements by Category/Protective Factor Time Frame



In Chart 3 there are some agreements that are listed more than once, as many agreements include multiple services to patrons and indicate multiple categories or protective factors from services provided by the agency.

# Active PSF COMMUNITY PROVIDERS Initiated Between 2009 and 2023

KEY: ★ Family Support and Child Development    ▣ Health and Safety    ⚙ Self-Sufficiency

✓ Knowledge of Parenting and Child Development    ◆ Nurturing and Attachment    ♥ Family Functioning & Resiliency

▲ Social Connections    ✕ Social and Emotional Competence of Children    ✱ Concrete Supports    ♣ Parental Resiliency

● Other    ✧ Not Indicated

Providers with **BOLDED** names represent Memorandum of Understandings (MOU) and Memorandum of Agreements (MOA).

Providers with UNDERLINED names represent Host Agency agreements.

## AARP-SCSEP ✧

Academic Foundations - Santa Fe College ♥

ACCESS Wireless ✱

Alachua County Social Services ●

**Alachua County Health Department (ACHD)** ✧

**Alachua County Housing Authority (ACHA)** ✧

Alachua County Library District (ACLD) ●

Alachua County Public Schools (ACPS) ● ★

Alachua County Sheriff's Office (ACSO) ▣

American Institute of Architects (AIA) Gainesville / Florida North Chapter ✕

American Red Cross - North Central Florida

Chapter ✱ ♥

At The WELLness Network, Inc. ▲

Big Brothers Big Sisters of Alachua County (BBBS) ✓

Bread of the Mighty Food Bank ✱

Cade Museum for Creativity and Invention ✱ ▲ ✕ ●

Catholic Charities Gainesville ⚙

CareerSource Florida Crown ✧

CDS Family & Behavioral Health Services, Inc.

(CDS) ★ ●

**Central Florida Community Action Agency, Inc** ✧

Child Advocacy Center (CAC) ✕

Childhood Development Services, Inc., Early Head Start ◆

Children's Medical Services (CMS) ▣

City of Gainesville, Department of Parks, Recreation, & Cultural Affairs, Youth Services Division ▲ ✕ ✓

College of Agricultural and Life Sciences - UF ✧

Columbia County Housing Authority (CCHA) ✱ ▲ ♥

Columbia County Public Library ▲ ✕ ✓

Columbia County Senior Services, Inc. (CCSS) ✱

Community Hospice and Palliative Care ▲ ♥

Dad, Can We Talk? (DCWT) ♣

**Department of Children and Families ESS Program** ✧

Early Learning Coalition of Alachua County (ELCAC) ●

Elizabeth Gutierrez ▲

Empowered to live the life you choose- Rebuilding Program ★ ▣ ● ⚙

Episcopal Children's Services Alachua County Head Start ✓

Equal Access Clinic ▣

Erin Huntington, M.A. CCC-SLP, LLC ●

Feeding Florida ✓ ♣

Florida Department of Health, Columbia/Hamilton County Health Departments ✱ ✓ ♥

Family Endeavors ✱ ●

Florida Gateway College (FGC) ✱ ✕

Florida Institute for Workforce Innovation (FIWI) ✧

Florida State College at Jacksonville ✧

**Friends of Columbia County Public Library** ✧

Gainesville HIPPY Inc. ▲ ◆ ✓

Gainesville Housing Authority ♥

Girl Scouts of Gateway Council (GSGC) ▲ ★

Girls on the Run (GOTR) ▲ ✕

Girls on the Run of Alachua County ▲ ●

Grace Marketplace ♣

Greater Faith Baptist Fellowship ✱ ▲ ♥

Hanley Center Foundation ✓

Haven Hospice ✱ ♥

Health Street, University of Florida's East Campus ★ ▣ ⚙ ●

Helping Hands Clinic ✱ ♥

Innovative Dads ▲ ◆ ✓ ●

Keep Alachua County Beautiful ✱

Lake Shore Hospital Authority ✱ ♣

Meridian Behavioral Healthcare, Inc. ▲ ✓ ♥ ●

New Mt. Pisgah AME Church ✕ ♣

O2B Kids! ★ ⚙

Pace Center for Girls of Alachua County ★ ●

Palms Medical Group ✱ ♥

Peaceful Paths Domestic Violence Network ♥

Project Helping Hands ✱

Queen of Peace Catholic Community ●

Safelink Wireless ✱

Saint Francis Pet Care ✱

Santa Fe College ♥

Saint Leo University ⚙ ●

Shine-Elder Options ♥ ●

Sierra Club ●

St. Barbara's Leadership Institute ✕

Star Center Theater, Inc. ▲ ✓

State of FL Department of Health ●

Suncoast Credit Union ✱ ♥

Suwannee River Area Health Education Center ♥ ●

**The Alachua/Bradford Regional Workforce Board (Florida Works)** ●

The Cultural Arts Coalition ▲ ✓ ♥

The National Caucus and Center on Black Aging Inc. ✧

Three Rivers Legal Services, Inc. ●

UF College of Education -- School of Special Education, School Psychology & Early Childhood Studies ✓

UF College of Medicine, Centering Pregnancy Program ✱ ▲ ✓ ● ♥ ◆

UF College of Medicine, Early Steps Program ★

UF College of Medicine, Healthy Families Alachua ★ ▣ ⚙ ▲ ◆ ✓ ●

UF College of Medicine, Mobile Health Clinic (UF-MHC) ♥

UF College of Nursing ▣

UF Department of Clinical and Health Psychology, College of Public Health and Health Professions ✱ ✕ ✓

UF Department of FYCS ✧

UF Family Nutrition Program ✱ ◆ ✓ ♥ ●

UF Harn Museum of Art ◆ ✓

United Way of Suwannee Valley ●

Village Counseling Center of Gainesville, Inc. ▲ ✓ ♥ ●

WellFlorida Council, Inc. ▣

<sup>1</sup> Center for the Study of Social Policy. (2015). Core Meanings of the Strengthening Families Protective Factors.

The contents of this project are funded by the Children's Bureau, under grant #90CA1868.

The contents of this project do not necessarily represent the official views of the Children's Bureau.