



PARTNERSHIP FOR
**STRONG
FAMILIES**

*Family
Resource Centers*

ACCOMPLISHMENTS REPORT

2024



IMPACT STATEMENT

With sixteen years of experience operating a network of Family Resource Centers (FRC), Partnership for Strong Families (PSF) has become a leader in the provision of primary and secondary prevention services. Relying upon the support of community partners, without whom this work would not be possible, our FRCs provide easily accessible and safe places for families and community members to seek support prior to the need for formal child welfare involvement. It is our goal to strengthen families so they may keep their children safe and thriving at home.

2024 YEAR IN NUMBERS

42,000+ SERVICES REQUESTED

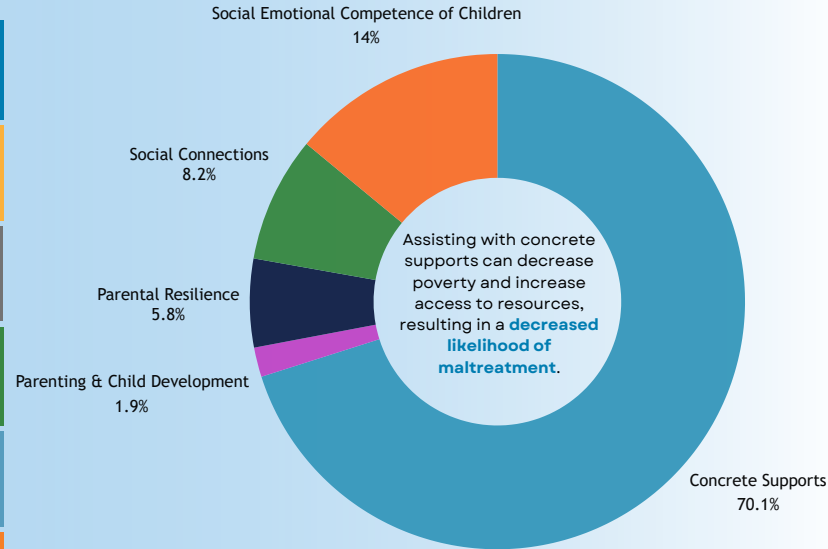
33,600+ PATRON VISITS

9,700+ HOURS VOLUNTEERED

100+ COMMUNITY PARTNERS

\$246,601 CASH/IN-KIND DONATIONS

\$1,947,019 GRANTS AWARDED



Services Requested by Protective Factor

*Protective Factors Framework – Center for the Study of Social Policy (www.cssp.org)
The data included in this report was collected from
January 2024 to December 2024.*

COMMUNITY SUPPORT

Thank you to our community grantors and donors who make this work possible. Here are a few of our major funders:

Alachua County CAPP

Children's Bureau

Children's Trust of Alachua County

LSF Health Systems

Meridian Health Care

Northside Church of Christ

Queen of Peace Catholic Community

Southwest Advocacy Group (SWAG)

State Farm Agent John Kasak

Suncoast Credit Union

Tri-County Community Resources, Inc.

United Way of North Central Florida

United Way of Suwannee Valley

Walmart



CHILDREN'S TRUST
OF ALACHUA COUNTY

Our Alachua County Family Resource Centers are funded in partnership with the Children's Trust of Alachua County.



SATISFACTION & OUTCOMES



We received 380 responses from Patrons to our Satisfaction Survey.

- 98% said they were pleased with the services received at the Resource Centers.
- 98% said they would recommend the Resource Centers to others.
- 98% said they would return to the Resource Center for additional services.



Every time I come to pick up food, they are such a pleasure. And they are kind and caring. They make what could be embarrassing instead be a source of joy and hope.



They are doing an amazing job. They are absolutely the very very best. They treat all with such concern and care.



We received 65 responses from Partners to our Partner Network Survey.

- 95% were satisfied with the FRC Network's overall performance.
- 92% were satisfied with our team's ability to resolve problems quickly and efficiently.
- 97% were satisfied with the team's level of professionalism.



We have worked with a lot of families who only have positive things to say about the resource center staff and services.



Kudos to a well-run organization with great leadership, locally and regionally.



PROGRAM HIGHLIGHTS

FAMILY FUN DAY & HURRICANE EXPO

With support from Sunshine Health, TCCRC hosted their first Family Fun Day & Hurricane Expo in May. The event reached more than 300 tri-county residents, and more than 50 partner agencies provided free resources. Attendees created their own hurricane kits and accessed information about hurricane preparedness and recovery.

OPIOID AWARENESS EVENT

NSFRC hosted an Opioid Awareness Event in November. Relevant community partners tabled to provide resources and information at the event. There were also presentations by Project Opioid and Florida Poison Control, along with a panel discussion that included subject matter experts. The event was well attended with more than 75 individuals in attendance.

RE-ENTRY CONFERENCE & JOB FAIR

In April, LP hosted their Annual Re-Entry Conference, helping local residents with challenging backgrounds find employment, with an average of 48 participants each day. Partners included the Alachua County Library District, Florida Department of Corrections, and Gainesville Housing Authority. In May, the Annual Re-Entry Job and Resource Fair at Library Headquarters attracted 110 job seekers and featured over 17 partners, including seven "second chance" employers.

STOP GUN VIOLENCE EVENT FOR TEENS

In September, SWAG FRC hosted a Stop Gun Violence event for teens in partnership with Strong MINDed Mentoring and the SW Advocacy Group. The workshop, attended by more than 25 teens, covered decision-making, self-awareness, and character building. This is the first in a series of workshops geared towards teens, with topics the teens helped to identify, including career choices, entrepreneurship, and overcoming barriers to higher education and employment.

EXPANDING OUR REACH

Through our partnership with the Children's Trust of Alachua County, our FRC Model has been expanded to additional communities throughout Alachua County through both our Community Resource Navigation Program and our FRC Consulting Program.

SUCCESS STORIES

LIBRARY PARTNERSHIP RESOURCE CENTER GAINESVILLE, FL (NORTHEAST)

A patron visited LP a year after attending the 2023 Re-Entry Conference and reported finding employment and successfully regaining partial custody of her children. Over the past year, she had also utilized the Resource Center for food and clothing resources. She stated the information she gained during the conference and additional supports received from the Resource Center will help her find long-term success!

NORTHSTAR FAMILY RESOURCE CENTER LAKE CITY, FL

A couple who had visited in the past recently became full-time caregivers for three of their grandchildren. They reached out to NSFRC for available resources and received guidance and support for themselves and the children. The children are now enrolled in NSFRC's Homework Help Program and received clothing and school supplies. The grandparents are extremely grateful for the additional support and the children are adapting well at home and school!

SWAG FAMILY RESOURCE CENTER GAINESVILLE, FL (SOUTHWEST)

A family secured safe, stable housing, and remained together after an extended period of being unhoused. Over several months, they visited to receive concrete supports, along with guidance navigating local resources such as pregnancy supports, a homeless prevention program, and a youth shelter. The father successfully maintained employment, saving money for rent, and the family also welcomed a new baby into their lives. Staff observed the father's confidence grow as he met goals set for himself and his family!

TRI-COUNTY COMMUNITY RESOURCE CENTER CHIEFLAND, FL

An unhoused mother with a newborn in the NICU was struggling to find stability for her family. She was assisted with first month's rent in an income-based apartment, utilities, and essentials such as diapers and a safe sleep option for the baby. She also received financial support with a background screening, helping her to pursue a career as a Medical Assistant and providing hope for her future!

COMMUNITY RESOURCE NAVIGATION (CRN) PROGRAM

Our CRN Program worked with a mother who had recently regained custody of her children. While the mother had been able to secure housing, she did not have bedroom furniture for the children. Through local partnerships, the family received mattresses, bunk beds, dressers, and bedding. Additionally, a local church delivered and assembled everything for the family. The mother was extremely happy to have safe places for her children to sleep and thrive!



Federal Grant Impact

In 2019, PSF received a 5-year federal grant from the Children's Bureau to evaluate and refine our network of Resource Centers and establish a new center in Lake City, which opened in March of 2021.

The grant included evaluation, implementation, and dissemination activities, with the following goals and objectives:

Evaluate FRC Model- Collect child safety and family well- being measures from our patrons, via surveys and secondary data as part of the outcome evaluation, as well as process evaluation activities which assess day-to-day operations.

Program Refinement- Utilize data collected from evaluation activities to refine our Resource Center Model, services, and programs.

Network Expansion- Expand to Lake City with the opening of the NorthStar Family Resource Center

What We Accomplished:

Evaluation- We enrolled 245 patrons into our study. These patrons completed survey instruments to measure child safety and family well- being, many also participated in focus groups. A highlight of our Process Evaluation was the Strengthening Families Self- Assessment Tool for Community Based Programs, which was administered to a team of staff, partners, and patrons. This process has helped us to identify the extent to which our Resource Center activities are aligned with each protective factor.

Expansion- With the help of our established Resource Center Advisory Council, we opened the NorthStar Family Resource Center in Lake City.

Refinement- Our evaluation team worked diligently to improve our data collection methods, and we also utilized the data collected to better refine our services and programming.

Dissemination- We have published 4 presentations and 98 reports, infographics, and summaries throughout the project, covering service utilization, provider agreements, protective factors, focus group analysis, and more. Check out our website at

<https://www.pfsf.org/resourcecenters/evaluationandexpansion/>.

What We are Learning:

Patrons enrolled in our study had (on average) a higher need than other patrons.

After one year of receiving services, 81.2% of caregivers reported their child(ren)'s difficulties to be "A bit better or much better".

During the evaluation period, over 2/3 of enrolled patrons increased their capacity in at least one or more Protective Factors.

Retrospective analyses, Strengthening Families Self-Assessment process, and Patron Feedback Groups (qualitative data) indicate a positive impact and benefits of FRCs on individual patrons and families (using Protective Factors framework).


This suggests that FRCs provide initial benefits and desired supports and services that help coping and adaptive skills for individuals, families, and the communities served.





Headquarters

5950 NW 1st Place, Suite 300
Gainesville, FL 32607

 352.244.1500

www.pfsf.org/resourcecenters

Accomplishments
2024
Report



PARTNERSHIP FOR
**STRONG
FAMILIES**

