



Quality Management Reports

May 2011

Exit Interviews

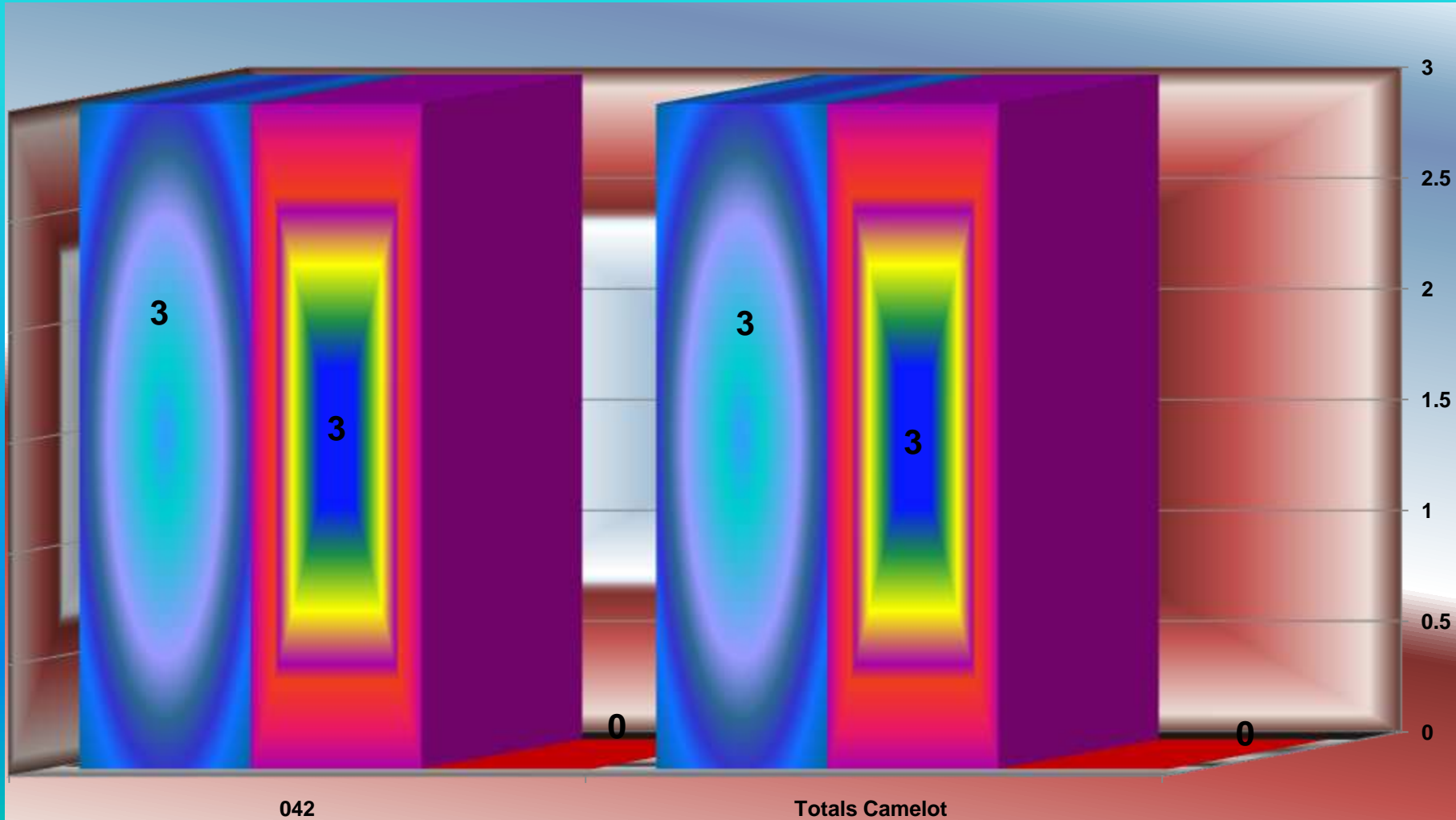
Exit Interviews Due / Completed / Outstanding- Camelot April 2011

Data Through 05/12/2011

■ # of Exits Due

■ # of Exits Completed

■ Number Outstanding



Date Prepared 05/12/2011

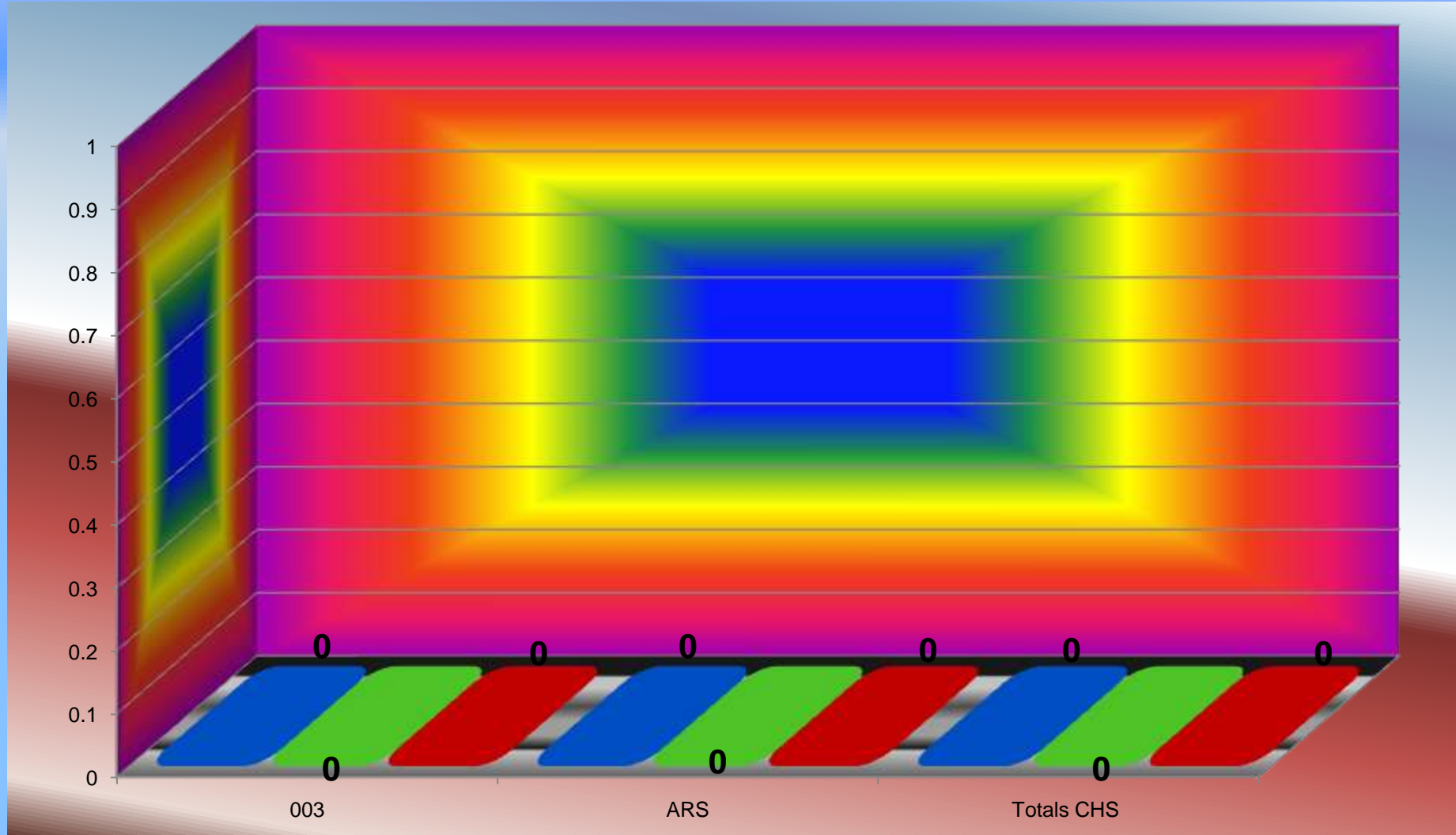
Exit Interviews Due / Completed / Outstanding - CHS April 2011

Data Through 04/30/2011

■ # of Exits Due

■ # of Exits Completed

■ Number Outstanding



Date Prepared 05/12/2011

Exit Interviews Due / Completed / Outstanding - Devereux April 2011

Data Through 04/30/2011

■ # of Exits Due ■ # of Exits Completed ■ Number Outstanding



Date Prepared 05/12/2011

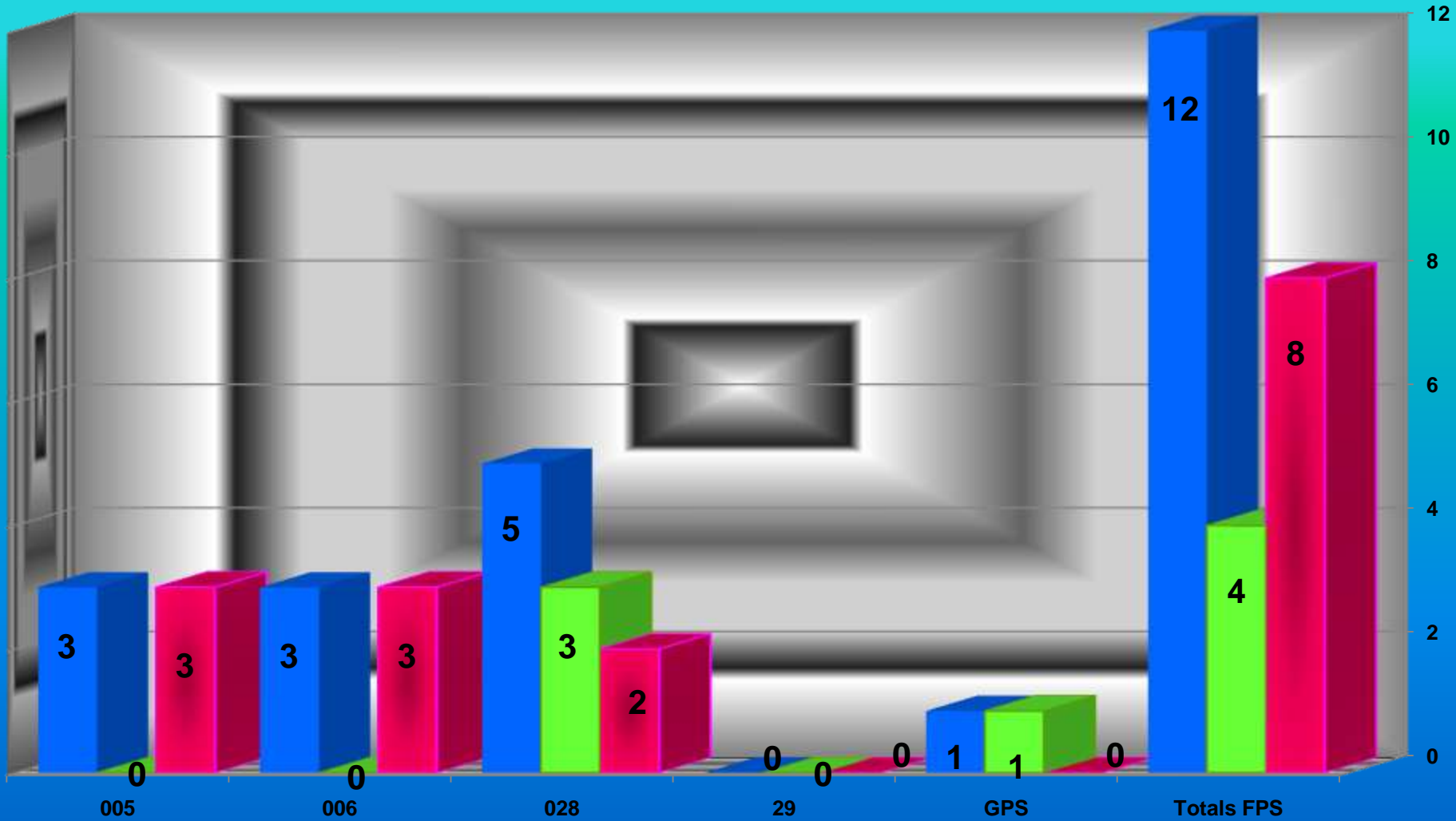
Exit Interviews Due / Completed / Outstanding - FPS April 2011

■ # of Exits Due

■ # of Exits Completed

■ Number Outstanding

Data Through 04/30/2011



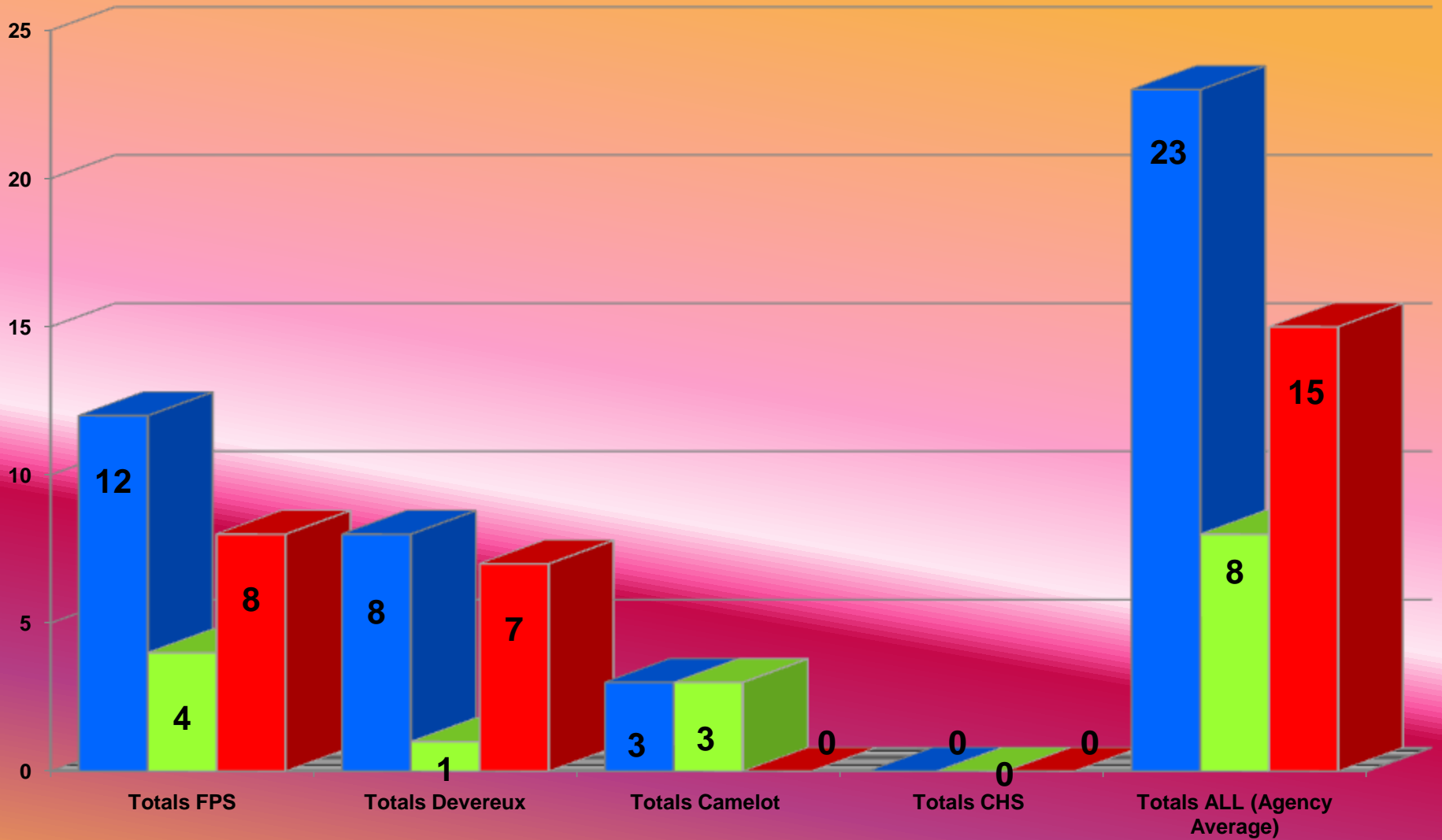
Exit Interviews Due / Completed / Outstanding - ALL April 2011

Data Through 04/30/2011

■ # of Exits Due

■ # of Exits Completed

■ Number Outstanding



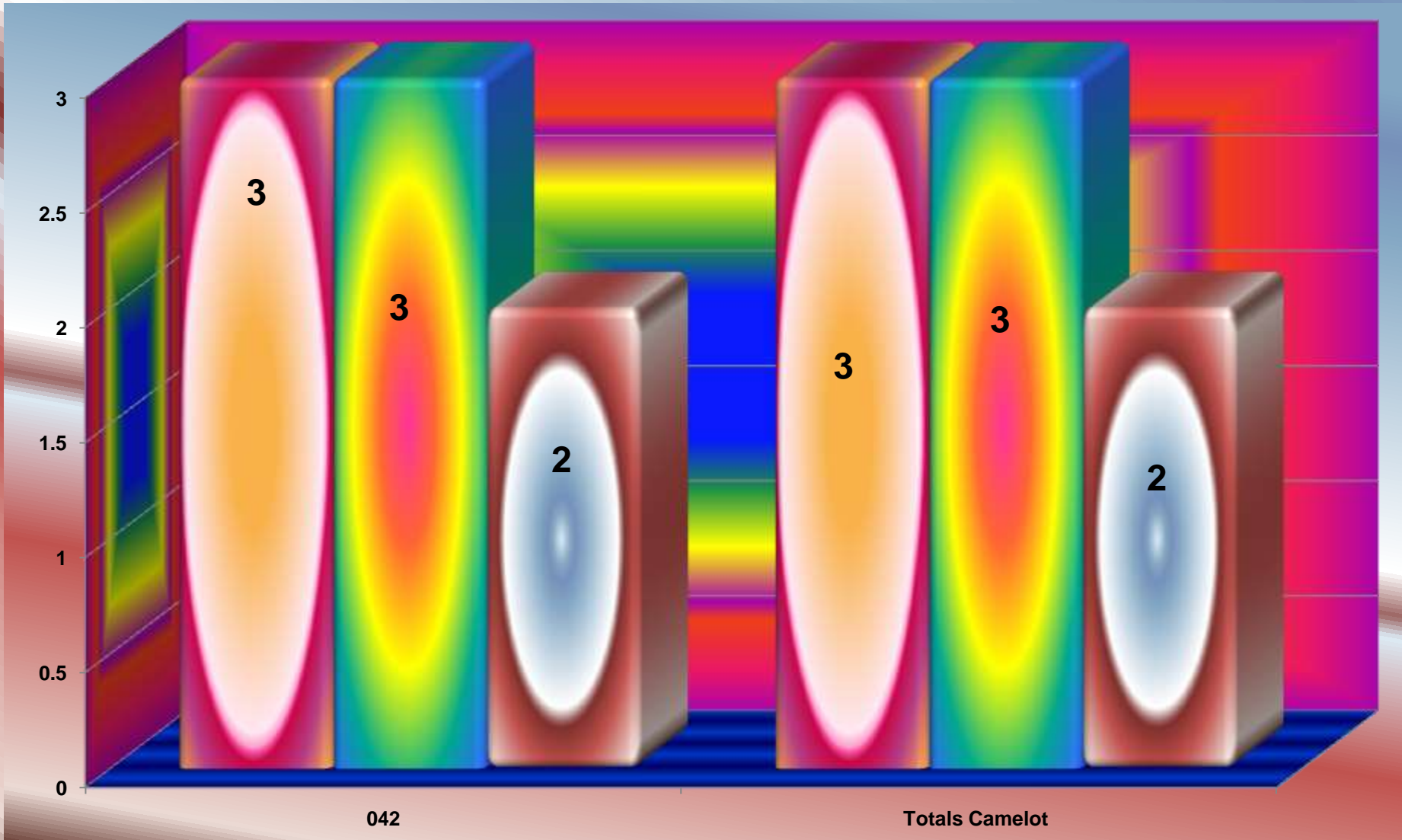
Date Prepared 05/13/2011

Exit Interviews Completed / Submitted Timely - Camelot

April 2011

Data Through 04/30/2011

of Exits Completed **Timely Submission** **Completed Timely / 5 Days or Less**

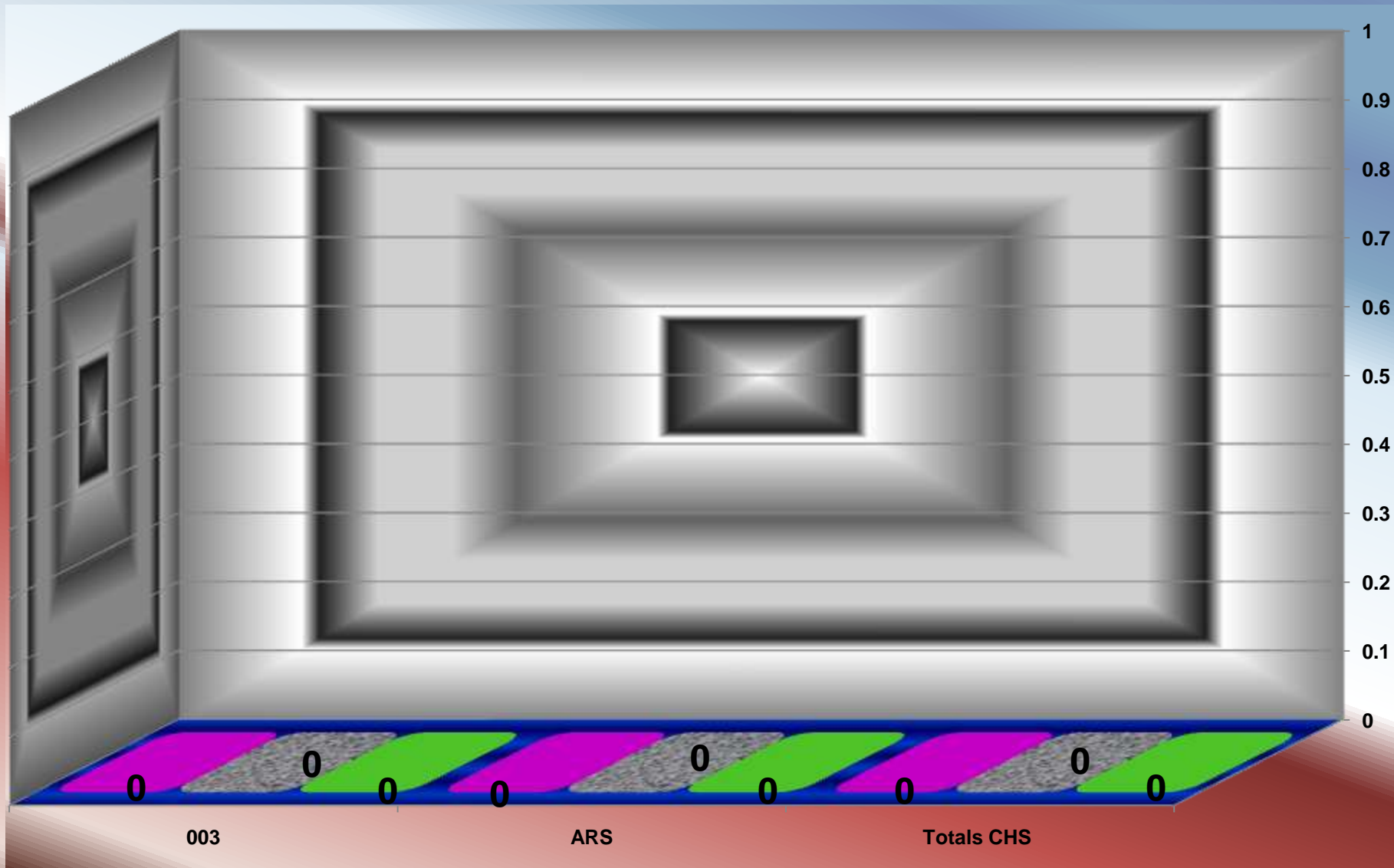


Date Prepared 05/13/2011

Exit Interviews Completed / Submitted Timely - CHS April 2011

Data Through 04/30/2011

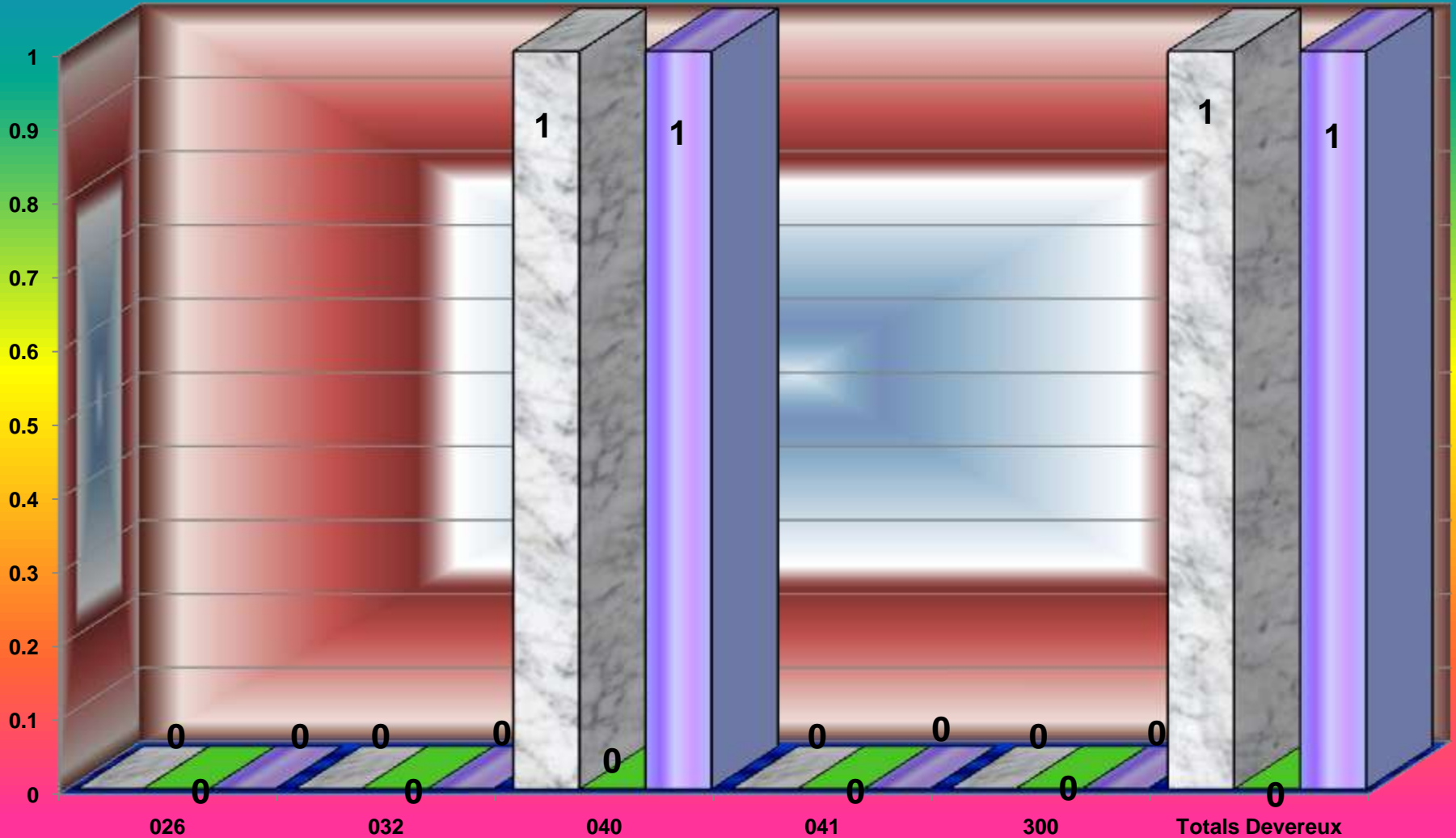
■ # of Exits Completed ■ Timely Submission ■ Completed Timely / 5 Days or Less



Exit Interviews Completed / Submitted Timely - Devereux April 2011

Data Through 04/30/2011

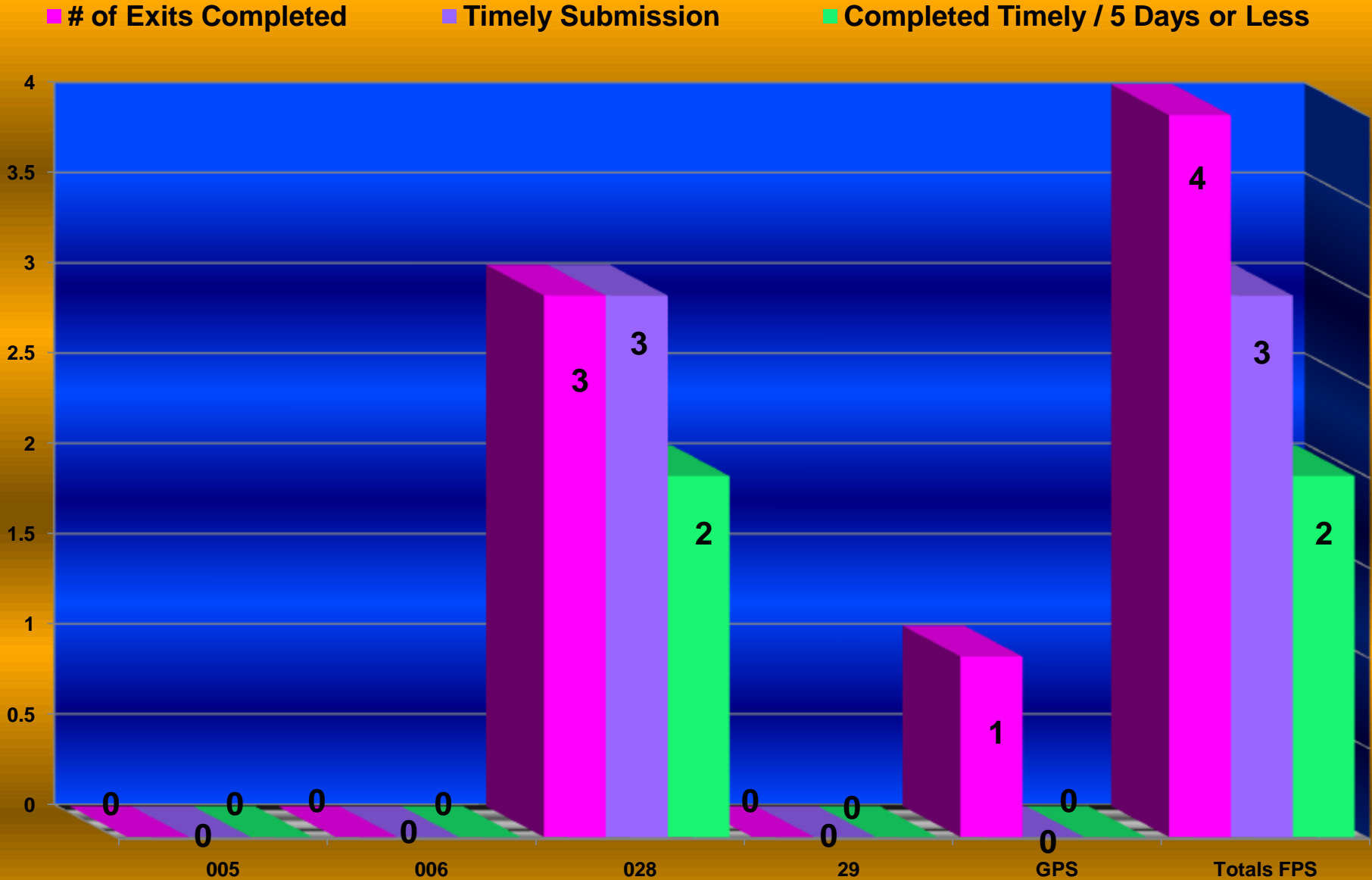
■ # of Exits Completed ■ Timely Submission ■ Completed Timely / 5 Days or Less



Date Prepared 05/13/2011

Exit Interviews Completed / Submitted Timely - FPS April 2011

Data Through 04/30/2011



Date Prepared 05/13/2011

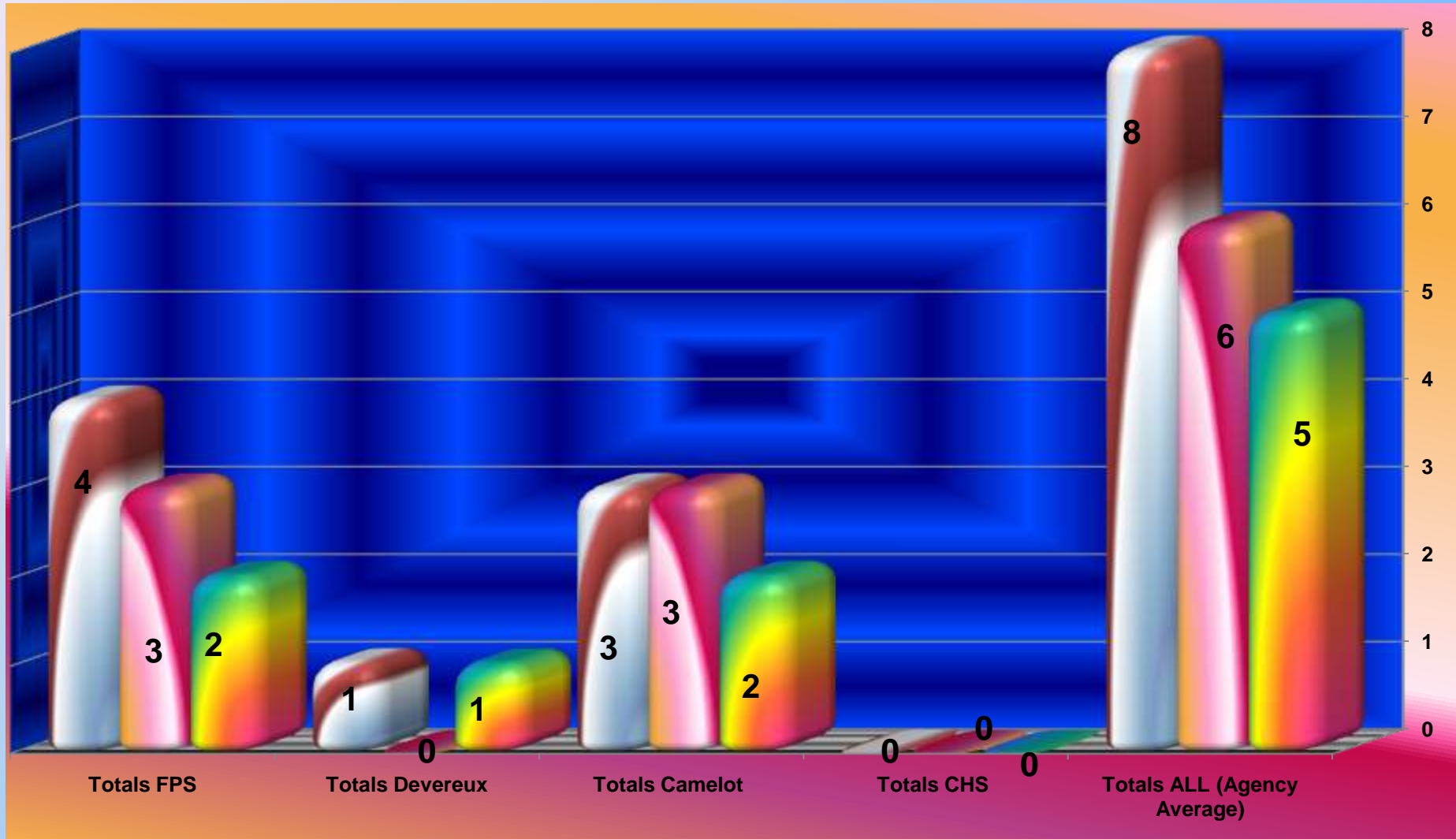
Exit Interviews Completed / Submitted Timely - All April 2011

Data Through 04/30/2011

of Exits Completed

Timely Submission

Completed Timely / 5 Days or Less



Date Prepared 05/13/2011

Timely, Average Days, < 5 Days and > 5 Days - Camelot April 2011

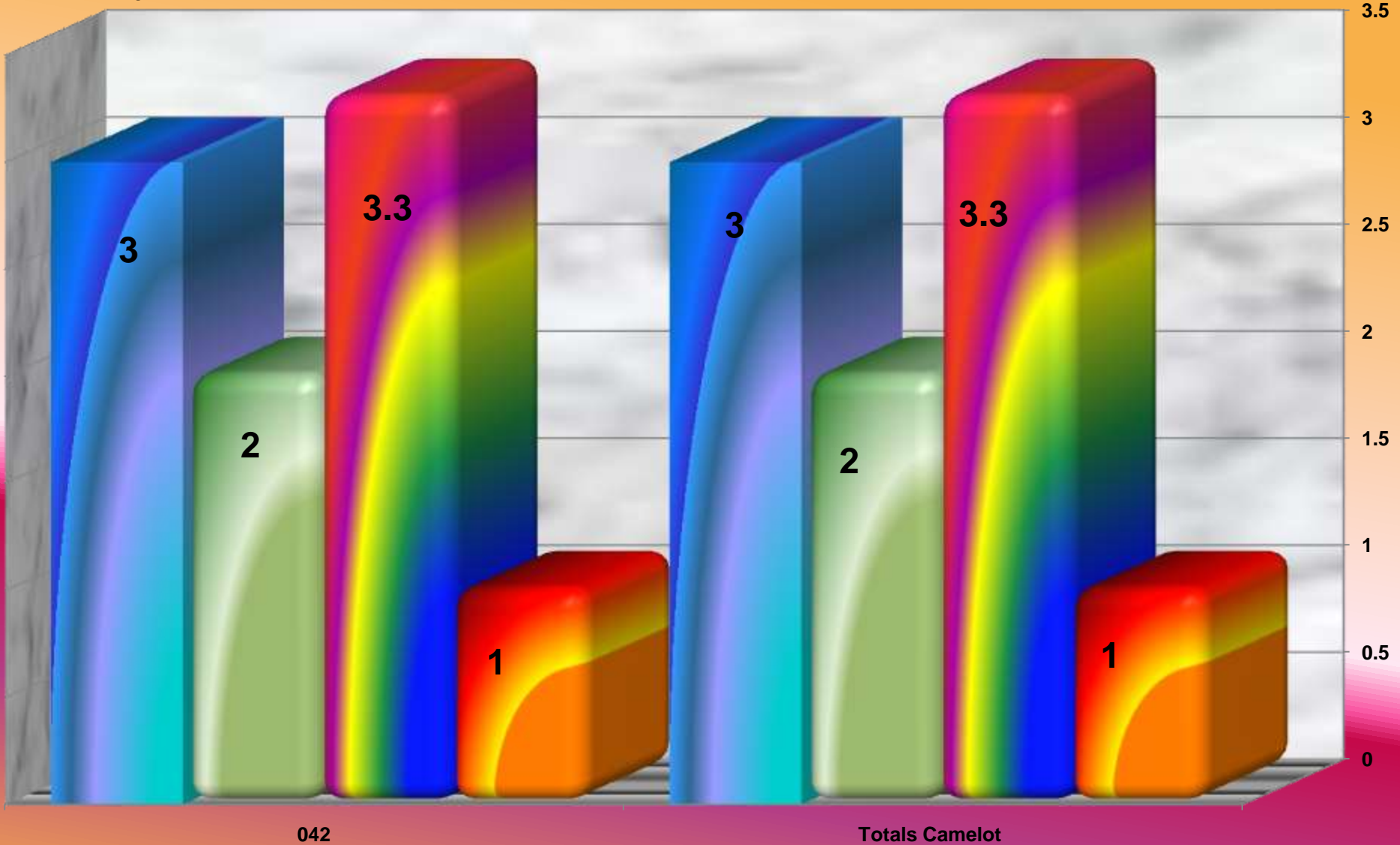
■ Timely Submission

■ Completed Timely / 5 Days or Less

■ Average Days to Complete

■ # 5 Days or More

Data Through 04/30/2011



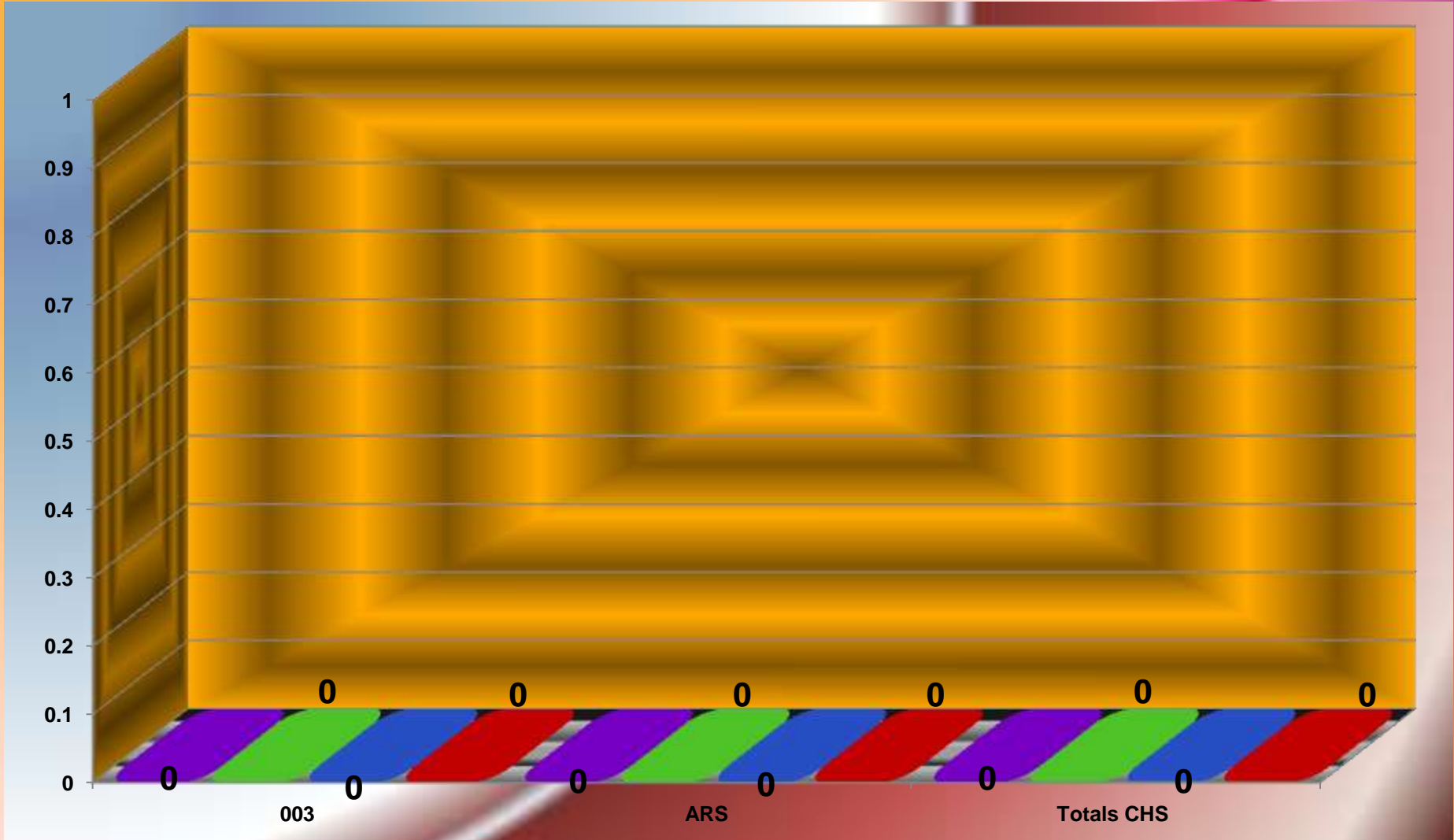
042

Totals Camelot

Timely, Average Days, ,5 Days and > 5 Days - CHS April 2011

■ Timely Submission ■ Completed Timely / 5 Days or Less ■ Average Days to Complete ■ # 5 Days or More

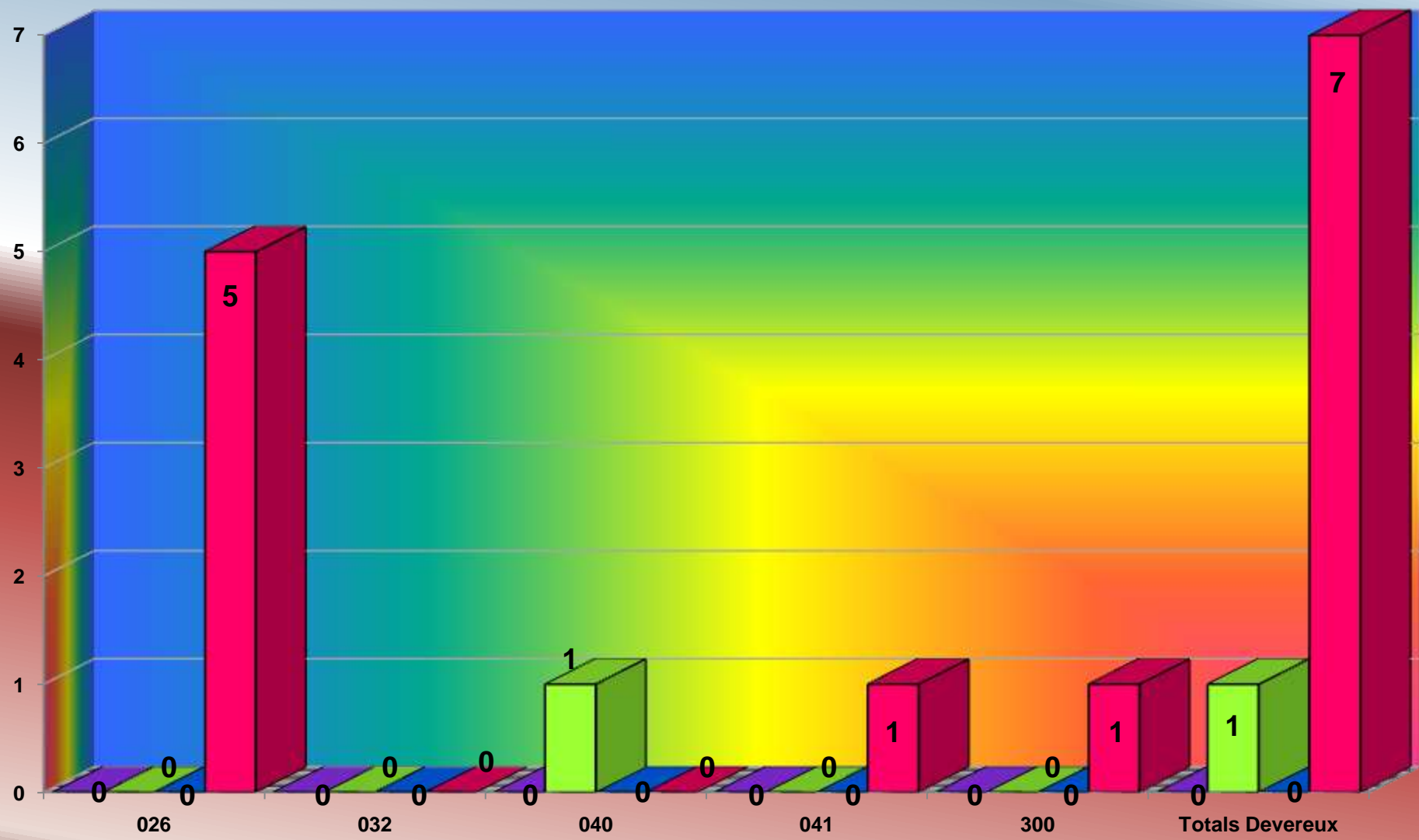
Data Through 04/30/2011



Timely, Average Days, < 5 Days and > 5 Days - Devereux April 2011

■ Timely Submission
 ■ Completed Timely / 5 Days or Less
 ■ Average Days to Complete
 ■ # 5 Days or More

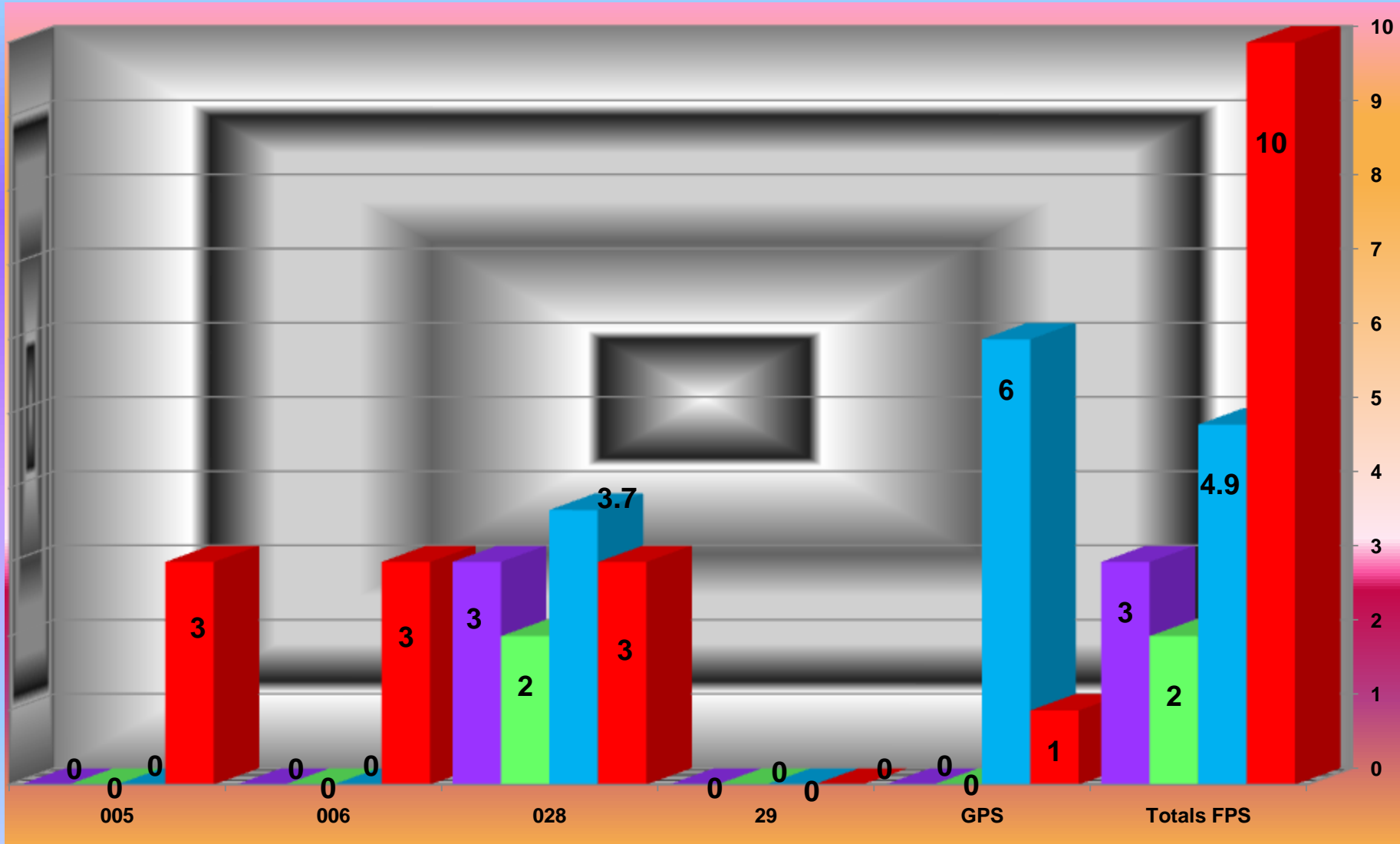
Data Through 04/30/2011



Timely, Average Days, < 5 Days and > 5 Days - FPS April 2011

■ Timely Submission
 ■ Completed Timely / 5 Days or Less
 ■ Average Days to Complete
 ■ # 5 Days or More

Data Through 04/30/2011

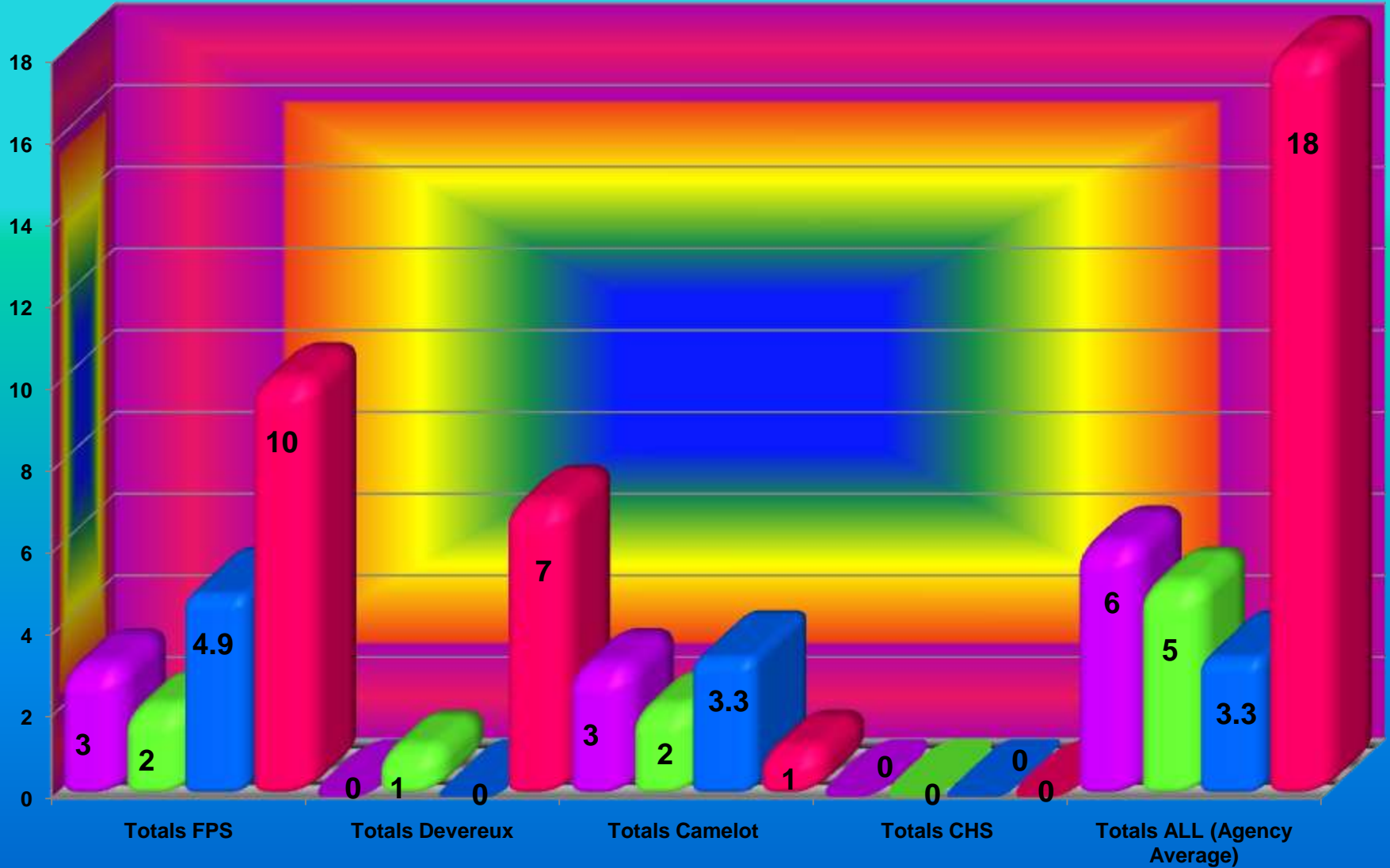


Date Prepared 05/16/2011

Timely, Average Days, < 5 Days and > 5 Days - All April 2011

■ Timely Submission
 ■ Completed Timely / 5 Days or Less
 ■ Average Days to Complete
 ■ # 5 Days or More

Data Through 04/30/2011

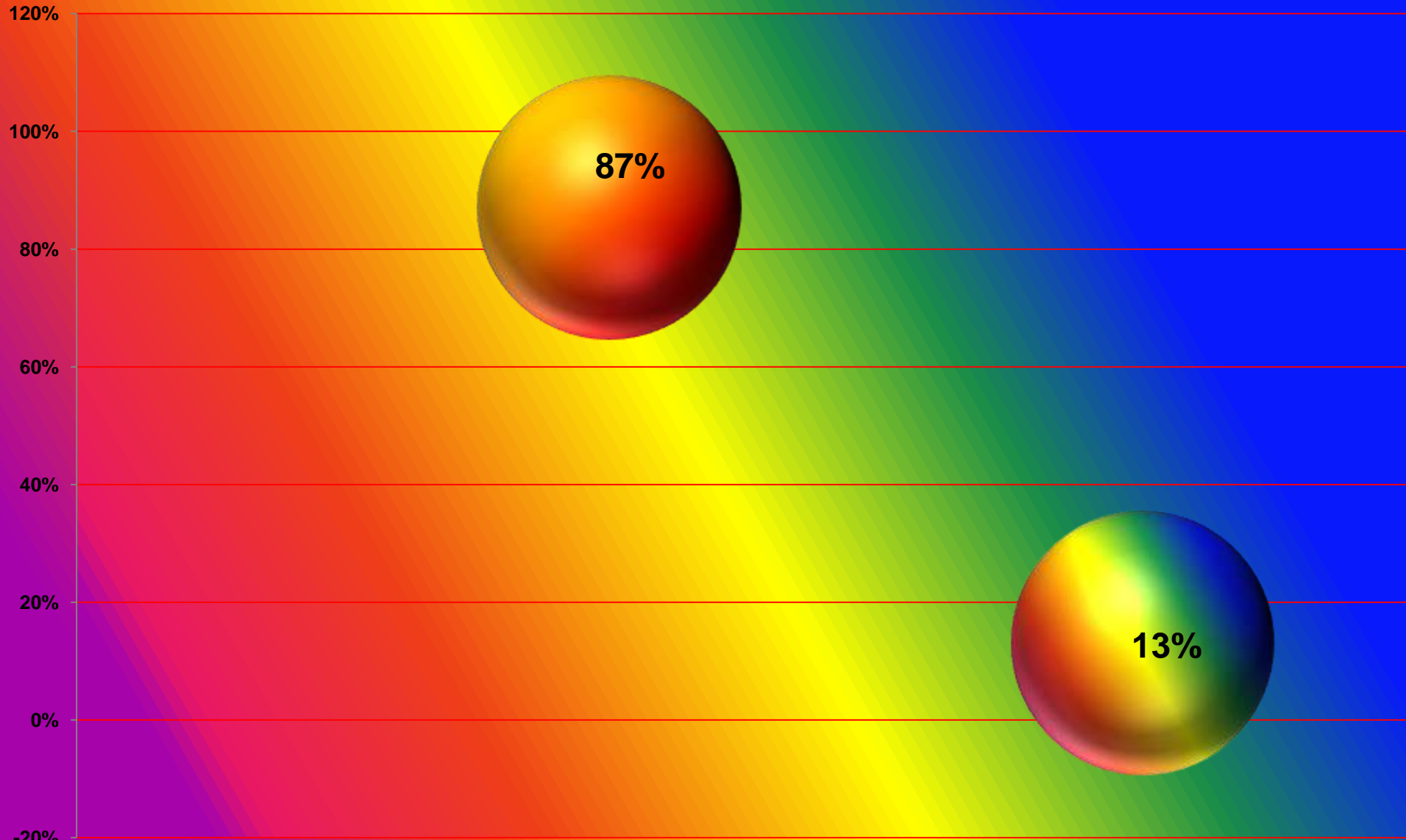


Children Feeling Safe in Placement April 2011

Data Through 04/30/2011

● YES

● Sometimes

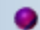


Date Prepared 05/12/2011

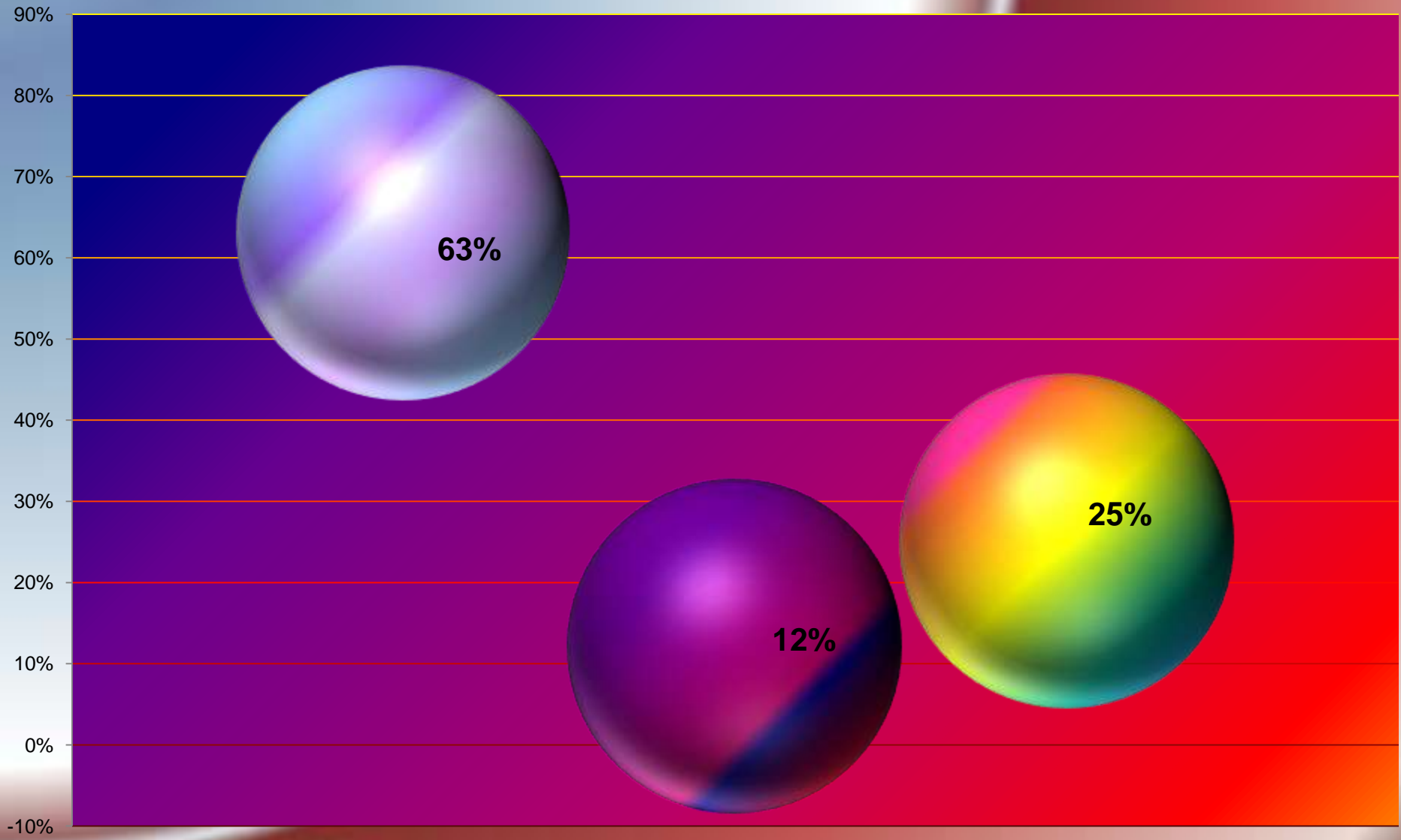
Children Satisfied with Placement April 2011

Data Through 04/30/2011

 YES

 NO

 Sometimes



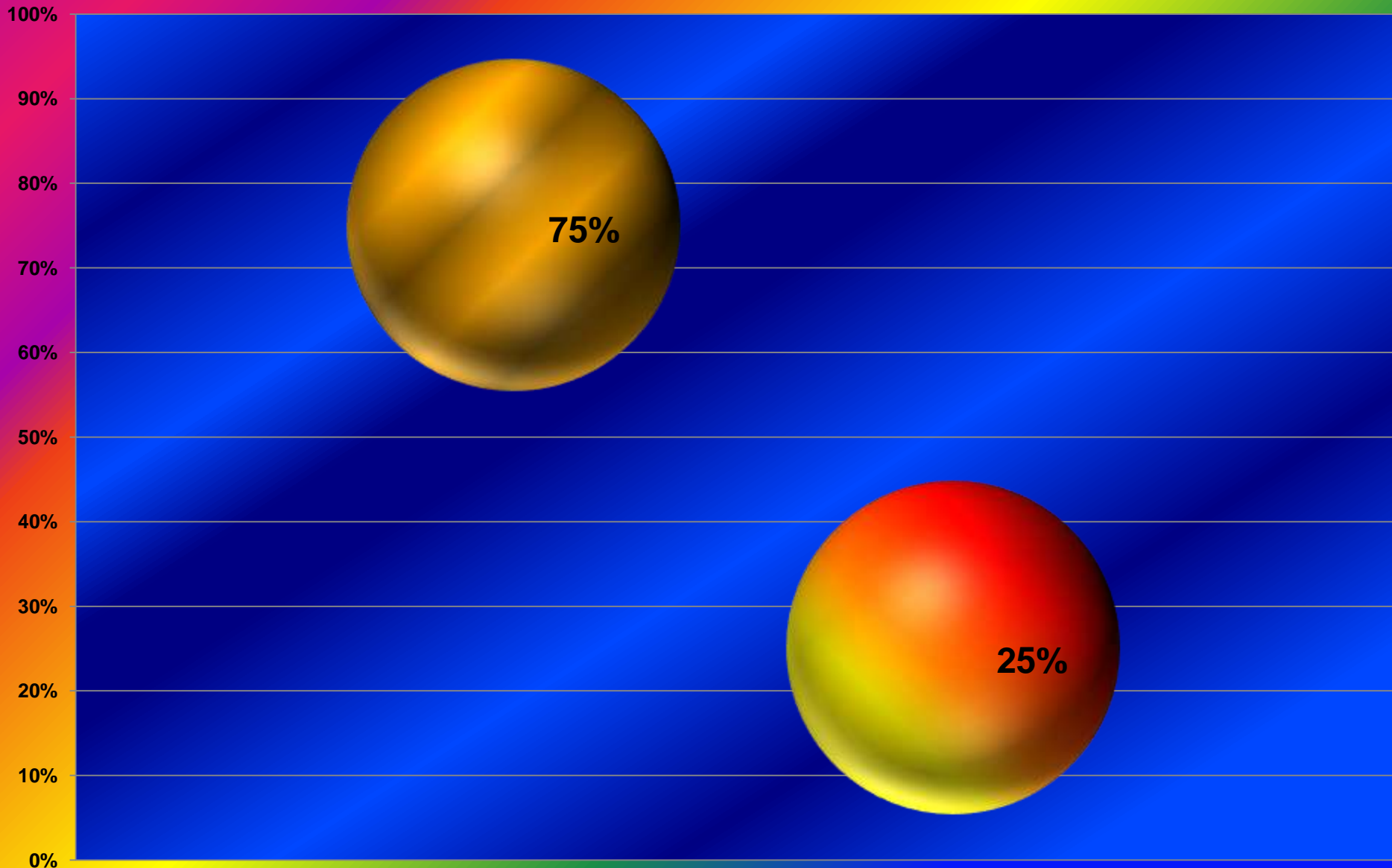
Date Prepared 05/17/2011

Reason for Leaving Placement April 2011

Data Through 04/30/2011

● Foster Parent Request

● Other



Date Prepared 05/17/2011

Inquiry, Complaint and Grievance Reports

Inquiry, Complaint and Grievance Reports

Number of Submissions, Timely Submissions and Founded Reports

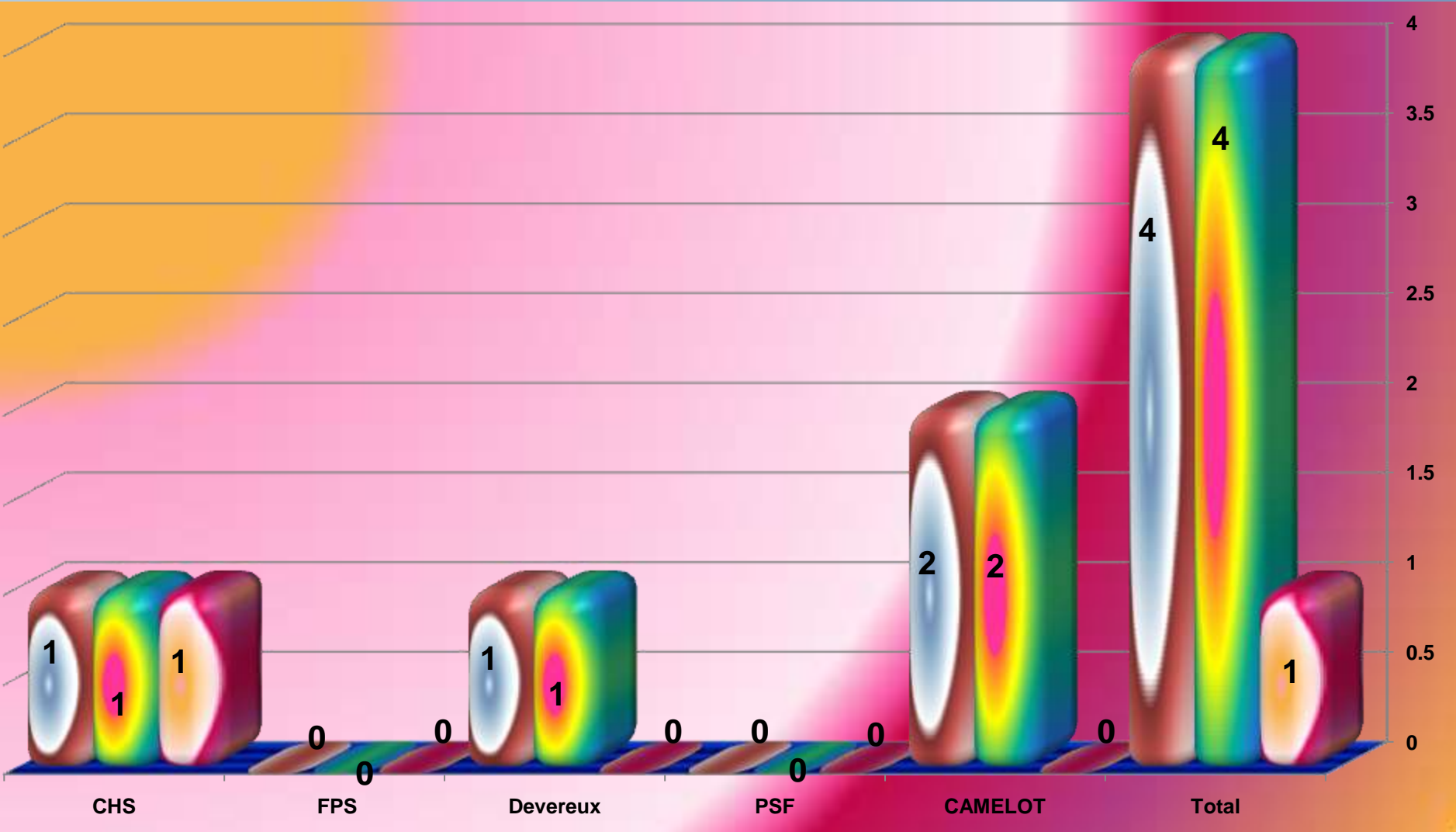
April 2011

Data Through 04/30/2011

Submitted

Timely

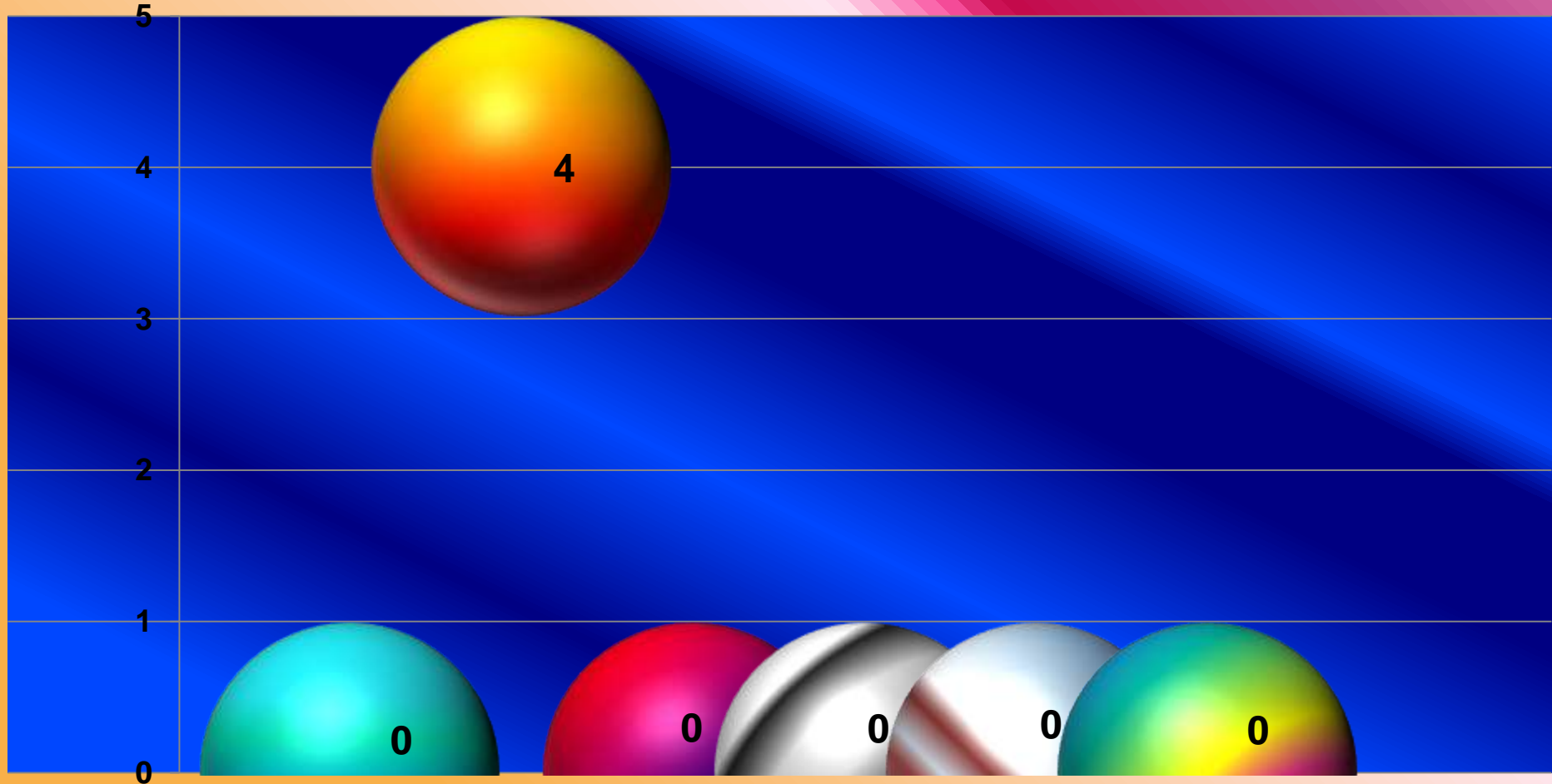
Founded



Inquiry, Complaint and Grievance Reports by Category April 2011

Data Through 04/30/2011

- Category Partner Agency Client Care
- Category Billing/Payment
- Category Service Provider Network
- Category Partner Agency Employee and Program Issues
- Category PSF Policy and Procedure
- Category Foster Parent

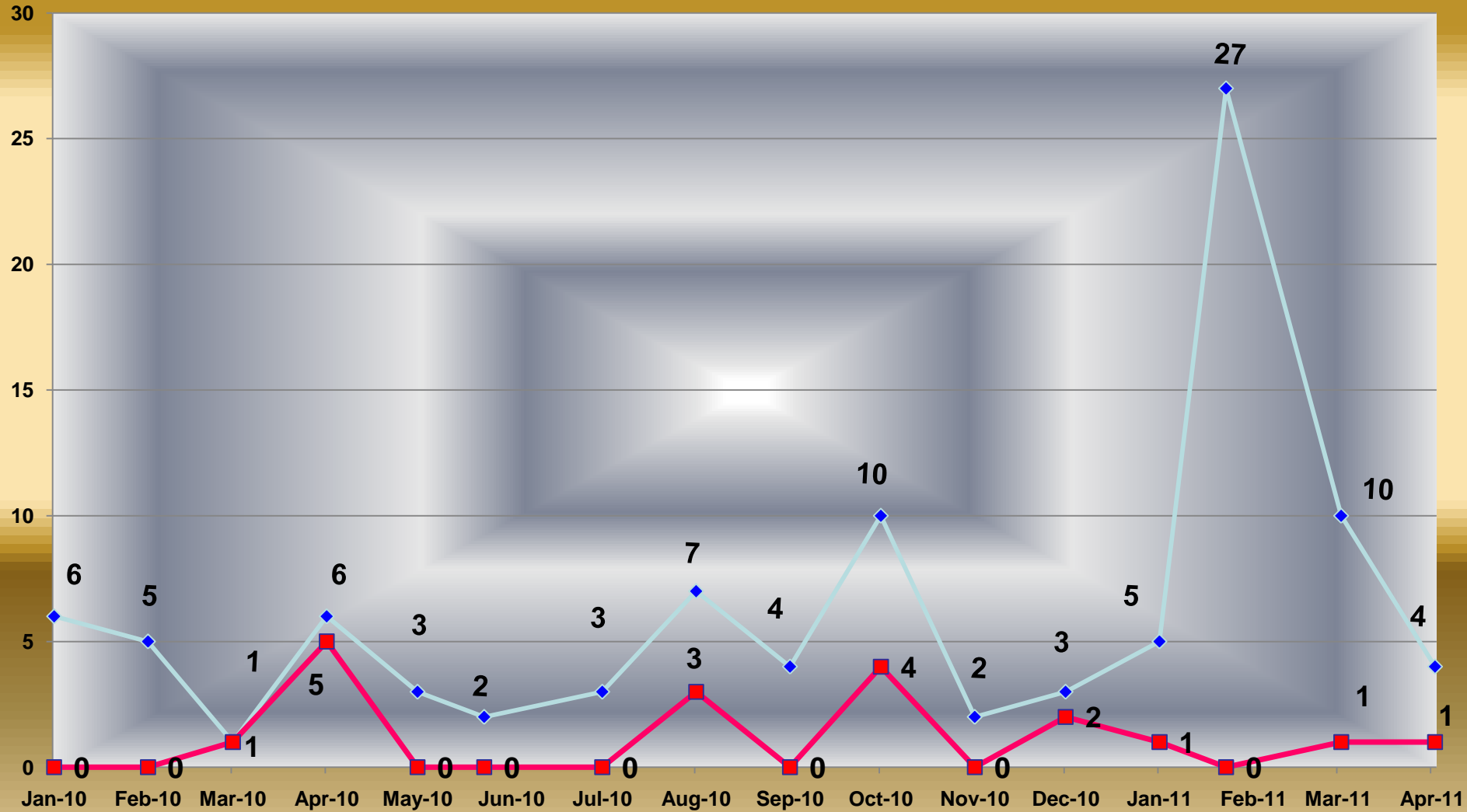


Inquiry, Complaint and Grievance Reports Number of Submissions and Number Founded January 2010 - April 2011

Data Through 04/30/2011

◆ # of Submissions

■ # Founded



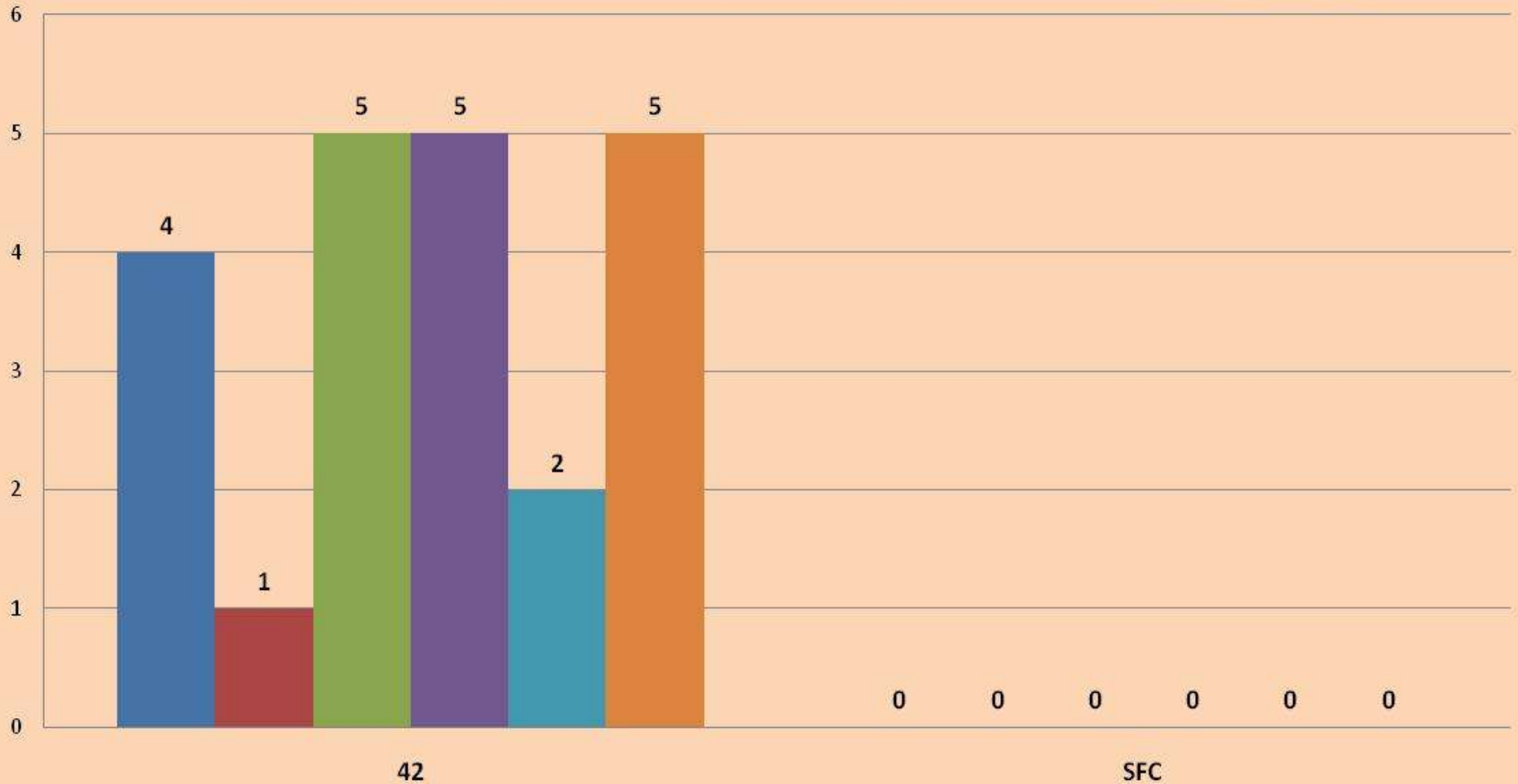
Date Prepared 05/04/2011

Critical Incidents

Incident Review Summary by Unit

April 2011

- Abuse Report Notification
- Non-Abuse Report
- Total Incident Reports Needed
- Total Incident Reports Received
- Timely Submission To Supervisor
- Follow-Up Needed



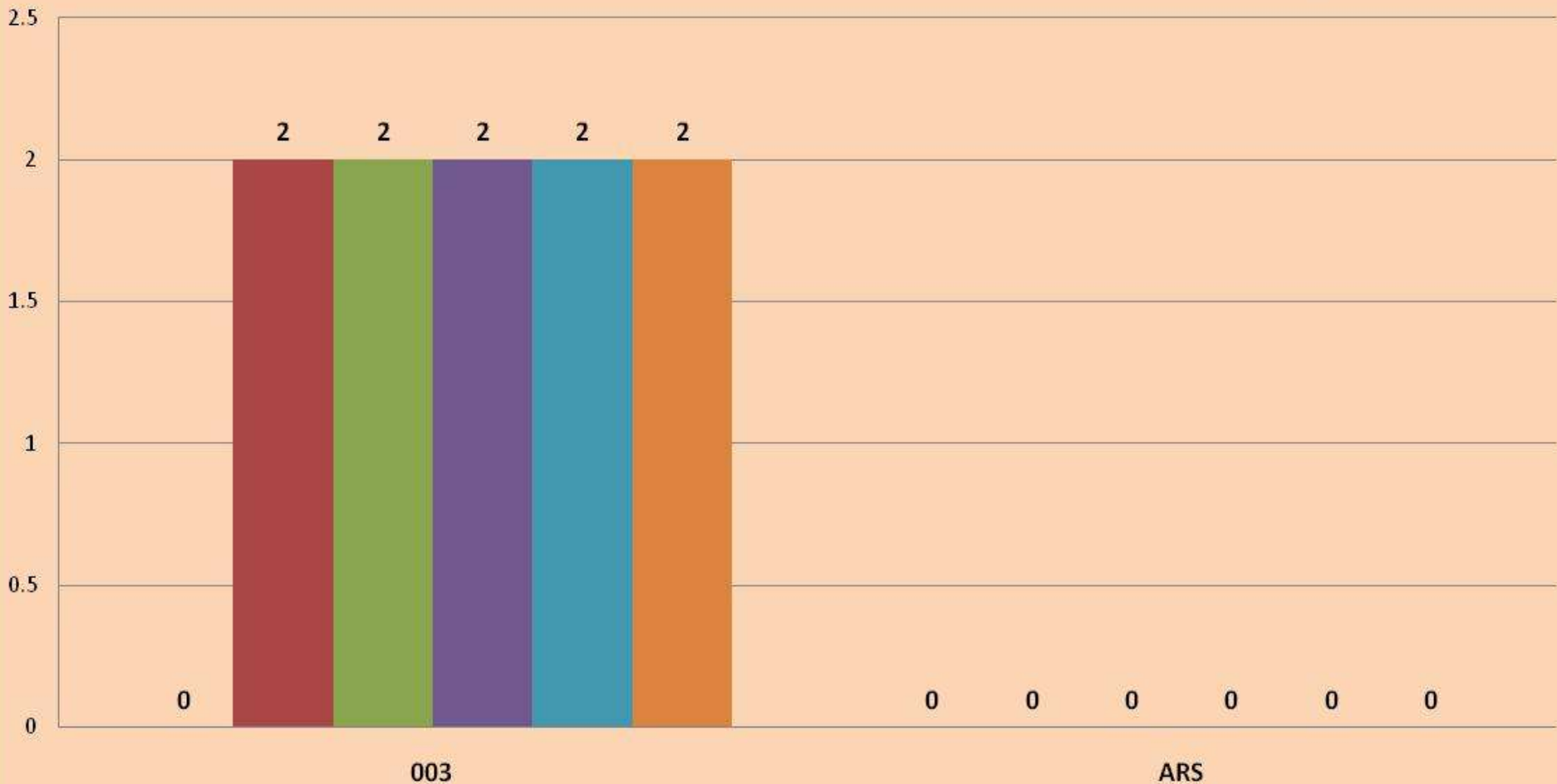
CAMELOT

date created: 5-16-2011

Incident Review Summary by Unit

April 2011

- Abuse Report Notification
- Non-Abuse Report
- Total Incident Reports Needed
- Total Incident Reports Received
- Timely Submission To Supervisor
- Follow-Up Needed

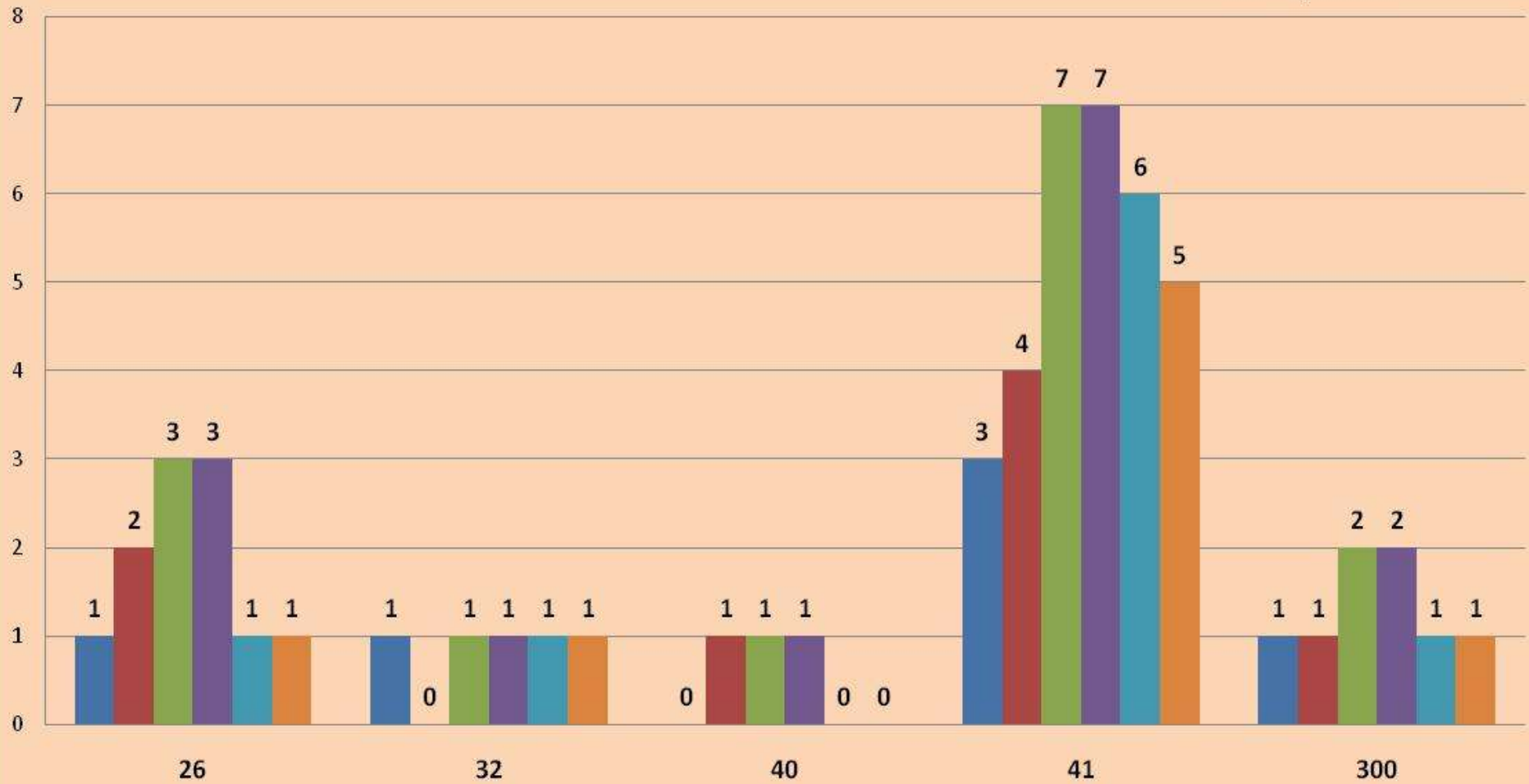


CHILDREN'S HOME SOCIETY

date created: 5-16-2011

Incident Review Summary by Unit April 2011

- Abuse Report Notification
- Non-Abuse Report
- Total Incident Reports Needed
- Total Incident Reports Received
- Timely Submission To Supervisor
- Follow-Up Needed

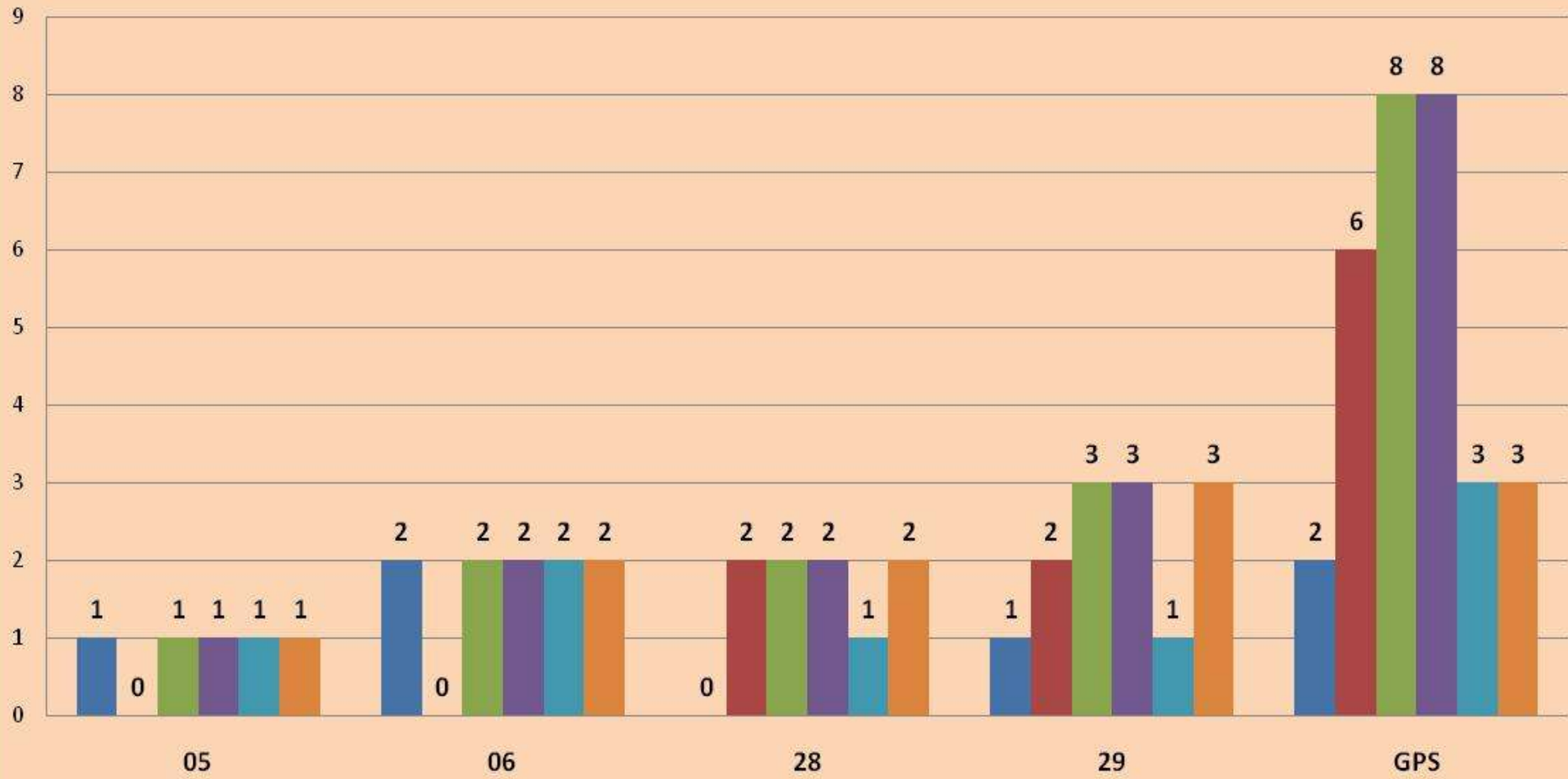


DEVEREUX

date created: 5-16-2011

Incident Review Summary by Unit April 2011

- Abuse Report Notification
- Non-Abuse Report
- Total Incident Reports Needed
- Total Incident Reports Received
- Timely Submission To Supervisor
- Follow-Up Needed



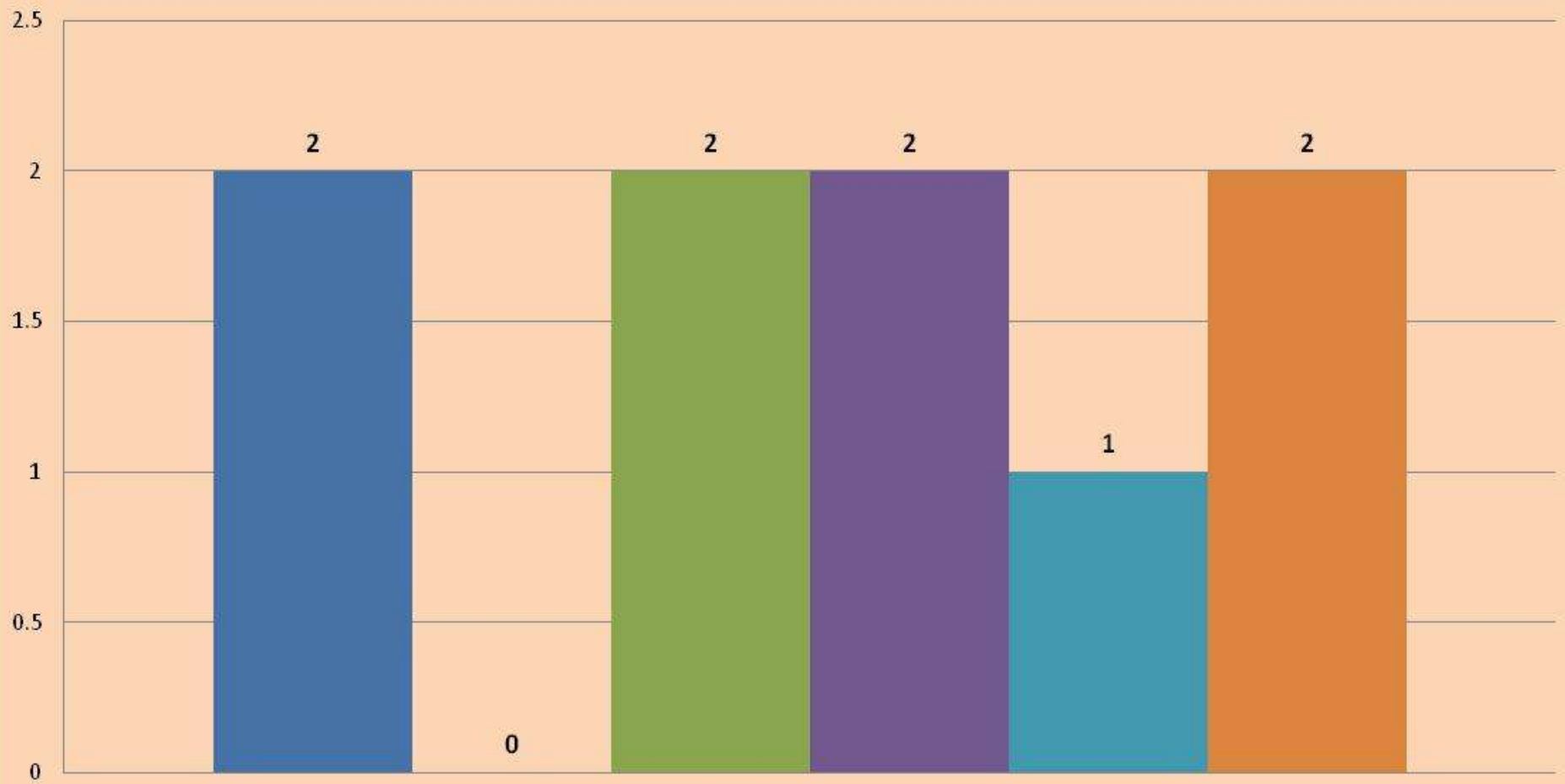
FAMILY PRESERVATION SERVICES

date created: 5-16-2011

Incident Review Summary by Unit

April 2011

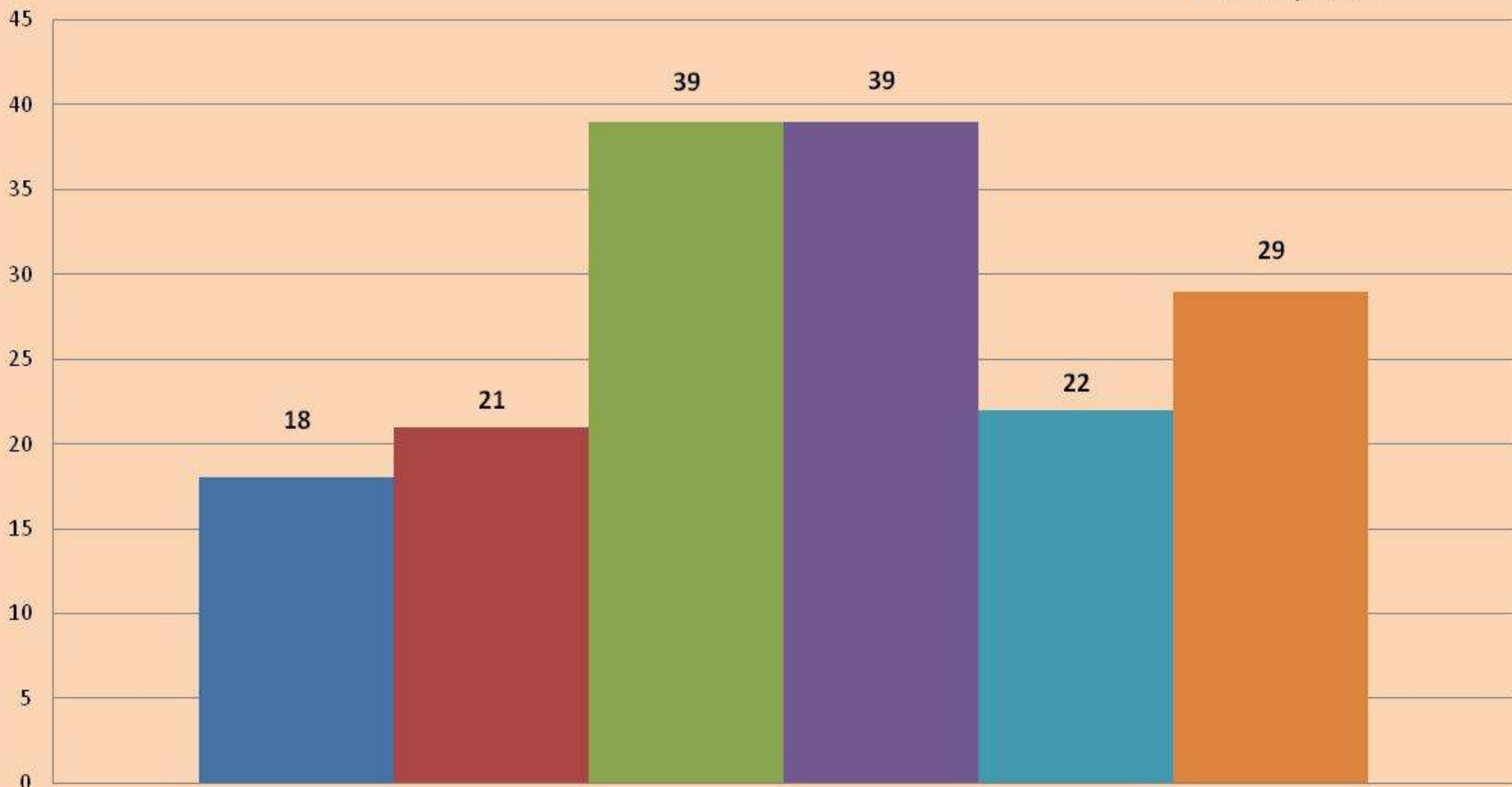
- Abuse Report Notification
- Non-Abuse Report
- Total Incident Reports Needed
- Total Incident Reports Received
- Timely Submission To Supervisor
- Follow-Up Needed



Incident Review Summary by Unit

April 2011

- Abuse Report Notification
- Non-Abuse Report
- Total Incident Reports Needed
- Total Incident Reports Received
- Timely Submission To Supervisor
- Follow-Up Needed



TOTAL PSF

date created: 5-16-2011

Foster Home Licensing Status

FOSTER HOMES BY COUNTY

County	Oct -09	Nov -09	Dec -09	Jan -10	Feb -10	Mar -10	Apr -10	May -10	Jun -10	July -10	Aug -10	Sept -10	Oct -10	Nov -10	Dec -10	Jan -11	Feb -11	Mar -11	Apr -11
Alachua	65	68	68	68	68	70	70	71	72	66	58	59	57	58	58	57	57	52	51
Bradford	8	8	8	8	8	9	8	8	7	4	4	4	4	4	4	4	5	5	6
Columbia	26	27	28	27	27	26	26	24	24	13	13	10	10	9	8	8	8	9	9
Dixie	2	2	2	2	2	2	2	2	2	2	1	1	1	1	1	1	1	0	0
Gilchrist	9	9	9	9	9	8	8	9	9	7	7	7	7	8	8	8	9	8	8
Hamilton	8	8	8	8	8	10	10	10	11	9	9	9	9	7	7	7	7	6	6
Lafayette	2	1	1	1	1	1	1	1	1	0	0	0	0	0	0	0	0	0	0
Levy	27	27	28	28	28	28	27	26	26	13	12	10	10	10	10	10	9	8	8
Taylor	8	8	8	8	8	8	7	7	7	2	2	2	2	2	2	2	2	2	2
Madison	7	6	6	6	6	6	6	6	6	2	2	1	1	1	1	1	2	2	2
Baker	7	7	7	7	7	7	7	7	7	6	4	6	6	6	6	6	6	6	5
Suwannee	20	18	18	18	18	17	17	18	16	11	11	10	8	8	8	7	7	6	8
Union	7	7	7	7	7	7	6	6	5	1	1	1	1	1	1	1	1	1	1
Putnam	N/A	N/A	N/A	N/A	N/A	N/A	N/A	1	1	1	1	1	1	1	1	1	1	1	1
Total	194	195	197	196	196	198	194	194	194	137	125	121	117	116	115	113	115	106	107

	Number of Homes																		
	Oct 09	Nov 09	Dec 09	Jan 10	Feb 10	Mar 10	Apr 10	May 10	Jun 10	July 10	Aug 10	Sep 10	Oct 10	Nov 10	Dec 10	Jan 11	Feb 11	Mar 11	Apr 11
Total New Homes	5	5	2	0	0	5	1	5	5	3	5	4	0	2	0	0	4	1	4
<i>STFC</i>	0	0	0	0	0	0	0	0	0	0	0	0	0	0	0	0	0	0	0
<i>Child Specific</i>	0	0	0	0	0	1	1	0	0	0	0	0	0	0	0	0	0	0	0
<i>Traditional</i>	5	5	2	0	0	4	0	5	5	3	5	4	0	2	0	0	4	1	4
Homes with Corrective Action	4	4	4	4	4	4	1	1	1	3	1	0	0	0	0	0	0	0	0
Homes Revoked/ Pending Revocation	0	0	0	0	0	0	0	0	0	0	0	0	0	0	0	0	0	0	0
Homes Closed	1	5	0	1	0	3	5	5	4	6	3	7	3	3	1	2	2	10	3

Initial
Family Team Conference
Data

Initial Family Team Conference Data April 2011

